



Community Open House

ERB PARK & SWIMMING POOL

PREPARED FOR THE CITY OF APPLETON

FEBRUARY 29, 2016



WELCOME

Dean Gazza

Director - Parks, Recreation & Facilities
City of Appleton

We desire your feedback

Tom Flick

Deputy Director - Parks, Recreation &
Facilities - *City of Appleton*

Kabel Helmbrecht

Recreation Coordinator/Pool Manager -
Parks, Recreation & Facilities -
City of Appleton

Steven Schrage

Project Manager - Parks, Recreation &
Facilities - *City of Appleton*

ERB PARK & SWIMMING POOL



6:00 p.m. - 7:00 p.m.

- *General Design Presentation*
- *Discussion Groups*

7:00 p.m. - 8:00 p.m.

- *General Design Presentation*
- *Discussion Groups*



Appleton

Evening's Itinerary

Community Open House
**Where we have been
and where we are going**

ERB PARK & SWIMMING POOL

PREPARED FOR THE CITY OF APPLETON

FEBRUARY 29, 2016



- 3/11/2013 – Hired Graef to perform preliminary planning for the renovation of Erb Park and Pool.
- 6/27/2013 – Held a public open house and performed survey to gather public input.
- 9/10/2014 – Graef provided a presentation to the Parks and Recreation Committee.
- 6/6/2015 – Pool open for season.
- 7/6/2015 – Additional surveys were offered to gather continued public input. Ran for about 6 weeks.
- 7/21/2015 – Hired contractor to research loss of water in 50 meter pool.
- 8/16/2015 – Pool closed for the season.
- 9/16/2015 – Initial findings reported by contractor regarding sources of water loss.
- 10/6/2015 – Mayor Hanna proposes budget including splash pad.
- 11/11/2015 – Common Council approves \$10.5 million to renovate Erb Park and Pool.
- 2/4/2016 – Hired MSA to design Erb Park and Pool updates.
- 2/29/2016 – **MSA proposes idea's for consideration for Erb Park and Pool updates.**
- 3/21/2016 – MSA to provide final concept for acceptance.
- 8/16/2016 – Close Erb Pool for 2016 season.
- Early July 2017 – Open newly renovated Erb Park and Pool!

Where we have been and where we are going

ERB PARK & SWIMMING POOL



Carter Arndt, AIA
Co-Project Manager // Architect
MSA Professional Services



Raine Gardner, PE
Co-Project Manager // Engineer
MSA Professional Services



Sarah McDonald, PLA
Landscape Architect
MSA Professional Services



Matt Freeby, AIA, LEED® AP
Principal-in-Charge and QA/QC
Water Technology, Inc.

DESIGN TEAM INTRODUCTIONS

ERB PARK & SWIMMING POOL



DESIGN TEAM

specialty experience – parks & aquatics



Community Open House

PRELIMINARY PROJECT VISION

ERB PARK & SWIMMING POOL

PREPARED FOR THE CITY OF APPLETON

FEBRUARY 29, 2016





Project Goal

Making Erb Park & Pool the **BEST!**

SEEING THE BIG PICTURE

- » **More than just a pool project!**
- » Erb Park holds a special place in the ❤️ of many
- » This major improvement project will reshape Erb Park for a century to come
- » Master Park Plan to set the vision
 - » Consider new ideas
 - » Plan for future improvements
 - » Share vision with community
 - » Gain community input & consensus
- » **Make the project reach its full potential!**



Making Erb Park & Pool ; the **BEST!**

ADDRESSING IMMEDIATE PRIORITIES

- » **Listening** to the Community
- » Understanding the City's **needs** and **goals**
- » **Identifying challenges** and **appropriate solutions**
- » On **budget** and on **schedule**

WITH **LONG-TERM PROJECT GOALS** IN MIND

- » Maintenance and durability
- » Easy-to-operate
- » Designed to suit staff needs



PRELIMINARY MASTER PARK PLAN

- » **REPLACED AGED & DETERIORATED AMENITIES**
- » **ADD AMENITIES**
- » **IMPROVE PARK DESIGN/LAY-OUT /PROXIMITIES**
- » **SENSITIVITY**
 - » PUBLIC DESIRES
 - » NEIGHBORHOOD
 - » MAINTENANCE & DURABILITY
- » **VIBRANT PARK EXPERIENCE!**

PARK CHARACTER & AMENITIES IMAGES



Entry plaza



Parking lot islands and permeable paving for stormwater management



Parking lot bio-infiltration planters for stormwater management



Net Climbers



Themed play



Accessible playground surfacings

PARK CHARACTER & AMENITIES IMAGES



Modern play equipment



8' wide multi-use trail with periodic bench seating



More tennis courts



Concrete ping pong tables



Concrete bean bag toss



Multi-purpose court

PARK CHARACTER & AMENITIES IMAGES



Grill stations with grill, picnic table and trash receptacle



Recreational ice skating and hockey rinks

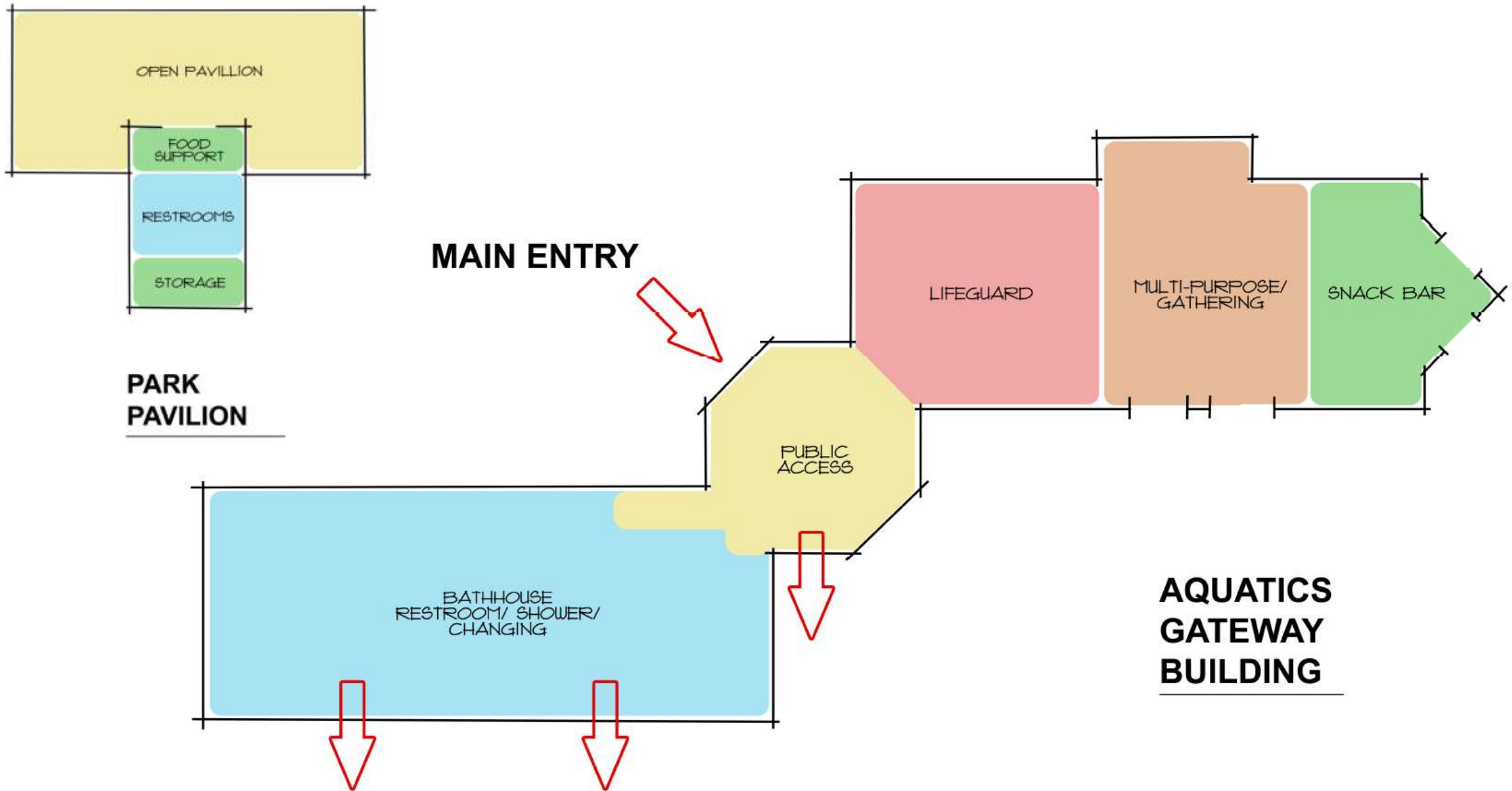


Ice skating trail to rinks









AQUATICS - GOALS

- » **FITNESS/THERAPY**
- » **COMPETITION**
- » **TRAINING**
- » **RECREATION**
- » **VIBRANT AQUATIC EXPERIENCE!**

AQUATICS – GENERAL FEATURES



Shade Structures



WTI

WATER TECHNOLOGY INC.
MSA PROFESSIONAL SERVICES //

Enabling people to positively impact the lives of others.

WORLD LEADERS IN AQUATIC PLANNING, DESIGN AND ENGINEERING

Turf Sunning Area



WTI

WATER TECHNOLOGY INC.
MSA PROFESSIONAL SERVICES // *Enabling people to positively impact the lives of others.*

WORLD LEADERS IN AQUATIC PLANNING, DESIGN AND ENGINEERING

Sun Deck with Chaise Lounges & Seating



WTI

WATER TECHNOLOGY INC.
MSA PROFESSIONAL SERVICES // Enabling people to positively impact the lives of others.

WORLD LEADERS IN AQUATIC PLANNING, DESIGN AND ENGINEERING

Lighted Facilities for Night Use



WTI

WATER TECHNOLOGY INC.
MSA PROFESSIONAL SERVICES // Enabling people to positively impact the lives of others.

WORLD LEADERS IN AQUATIC PLANNING, DESIGN AND ENGINEERING

Covered Birthday Party Rentals



WTI

WATER TECHNOLOGY INC.
MSA PROFESSIONAL SERVICES // *Enabling people to positively impact the lives of others.*

WORLD LEADERS IN AQUATIC PLANNING, DESIGN AND ENGINEERING

Snack and Beverage Service (Park & Pool)



WTI

WATER TECHNOLOGY INC.
MSA PROFESSIONAL SERVICES // Enabling people to positively impact the lives of others.

WORLD LEADERS IN AQUATIC PLANNING, DESIGN AND ENGINEERING

Concession Deck (Sun and Shade)



WTI

WATER TECHNOLOGY INC.
MSA PROFESSIONAL SERVICES // *Enabling people to positively impact the lives of others.*

WORLD LEADERS IN AQUATIC PLANNING, DESIGN AND ENGINEERING

Proposed Aquatics Package

COMPETITION
WITH RECREATIONAL FEATURES



Competitive Swimming Lanes (50 Meters)



WTI

WATER TECHNOLOGY INC.
MSA PROFESSIONAL SERVICES // Enabling people to positively impact the lives of others.

WORLD LEADERS IN AQUATIC PLANNING, DESIGN AND ENGINEERING

One Meter Diving Board



WTI

WATER TECHNOLOGY INC.
MSA PROFESSIONAL SERVICES // Enabling people to positively impact the lives of others.

WORLD LEADERS IN AQUATIC PLANNING, DESIGN AND ENGINEERING

Aqua Climbing Wall



WTI

WATER TECHNOLOGY INC
MSA PROFESSIONAL SERVICES // *Enabling people to positively impact the lives of others.*

WORLD LEADERS IN AQUATIC PLANNING, DESIGN AND ENGINEERING

Optional Temporary Water Activities - Floatables



WTI

WATER TECHNOLOGY INC
MSA PROFESSIONAL SERVICES // *Enabling people to positively impact the lives of others.*

WORLD LEADERS IN AQUATIC PLANNING, DESIGN AND ENGINEERING

Optional Temporary Water Activities - Slackline



WTI

WATER TECHNOLOGY INC.
MSA PROFESSIONAL SERVICES // Enabling people to positively impact the lives of others.

WORLD LEADERS IN AQUATIC PLANNING, DESIGN AND ENGINEERING

Optional Water Polo



WTI

WATER TECHNOLOGY INC.
MSA PROFESSIONAL SERVICES //

WORLD LEADERS IN AQUATIC PLANNING, DESIGN AND ENGINEERING

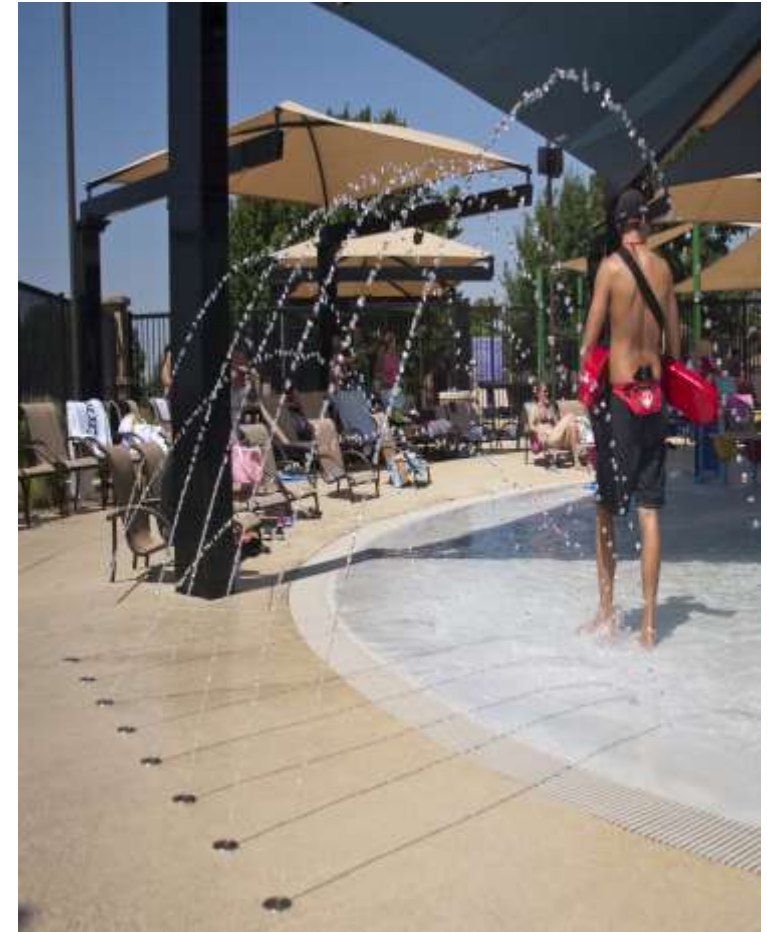
Enabling people to positively impact the lives of others.

Proposed Aquatics Package

LEISURE POOL/FITNESS POOL



Geysers & Deck Sprays



WTI

WATER TECHNOLOGY INC
MSA PROFESSIONAL SERVICES // *Enabling people to positively impact the lives of others.*

WORLD LEADERS IN AQUATIC PLANNING, DESIGN AND ENGINEERING

Interactive Water Play Area



WTI

WATER TECHNOLOGY INC
MSA PROFESSIONAL SERVICES // *Enabling people to positively impact the lives of others.*

WORLD LEADERS IN AQUATIC PLANNING, DESIGN AND ENGINEERING

Shallow Water - Zero Depth Entry Pool



WTI

WATER TECHNOLOGY INC.
MSA PROFESSIONAL SERVICES // *Enabling people to positively impact the lives of others.*

WORLD LEADERS IN AQUATIC PLANNING, DESIGN AND ENGINEERING

Water Bench



WTI

WATER TECHNOLOGY INC
MSA PROFESSIONAL SERVICES // Enabling people to positively impact the lives of others.

WORLD LEADERS IN AQUATIC PLANNING, DESIGN AND ENGINEERING

Basketball Hoops



Tot Slide



WTI

WATER TECHNOLOGY INC.
MSA PROFESSIONAL SERVICES //

WORLD LEADERS IN AQUATIC PLANNING, DESIGN AND ENGINEERING

Enabling people to positively impact the lives of others.

Water Slide



WTI

WATER TECHNOLOGY INC.
MSA PROFESSIONAL SERVICES // Enabling people to positively impact the lives of others.

WORLD LEADERS IN AQUATIC PLANNING, DESIGN AND ENGINEERING

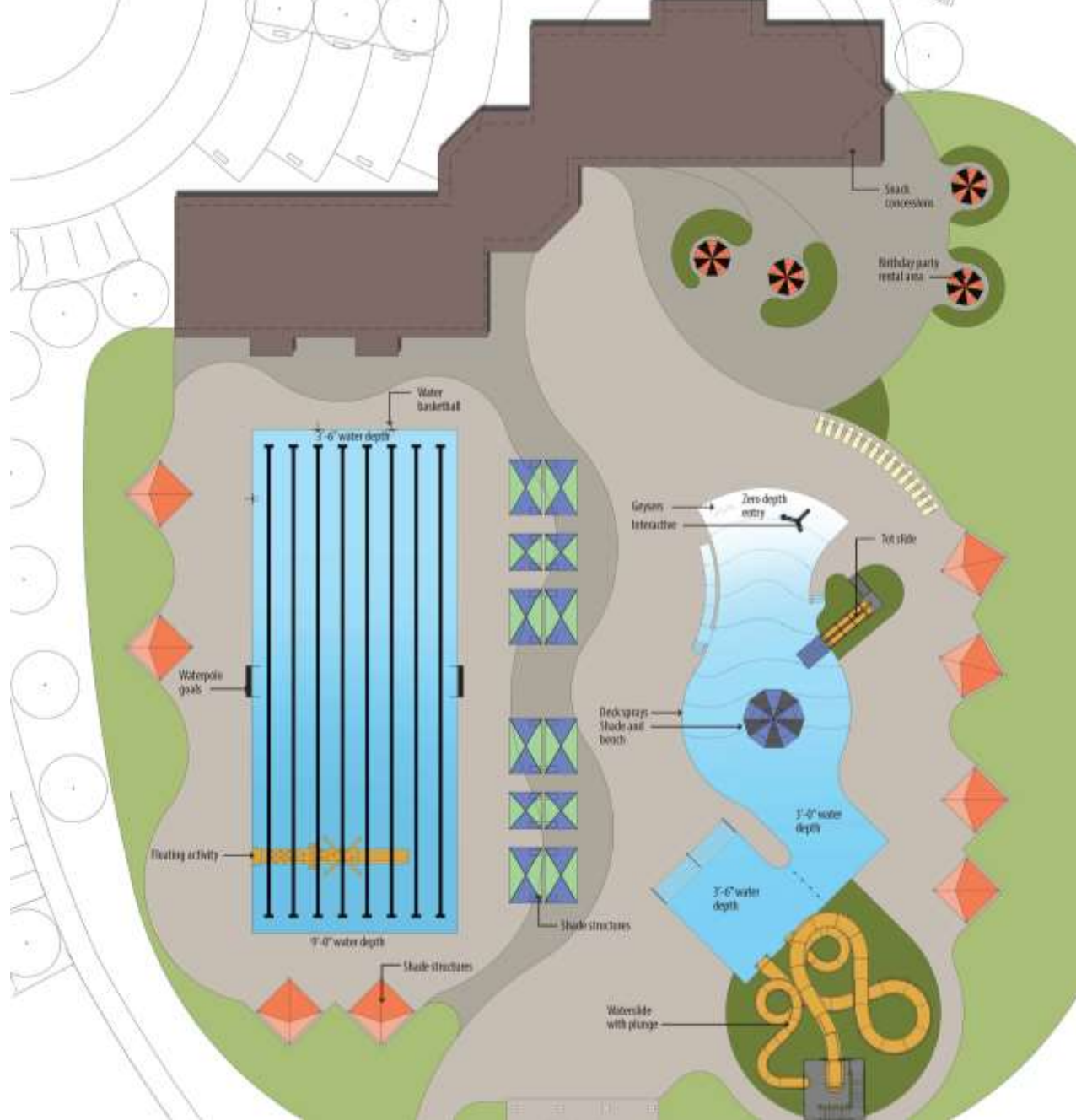
Slide Run-Out

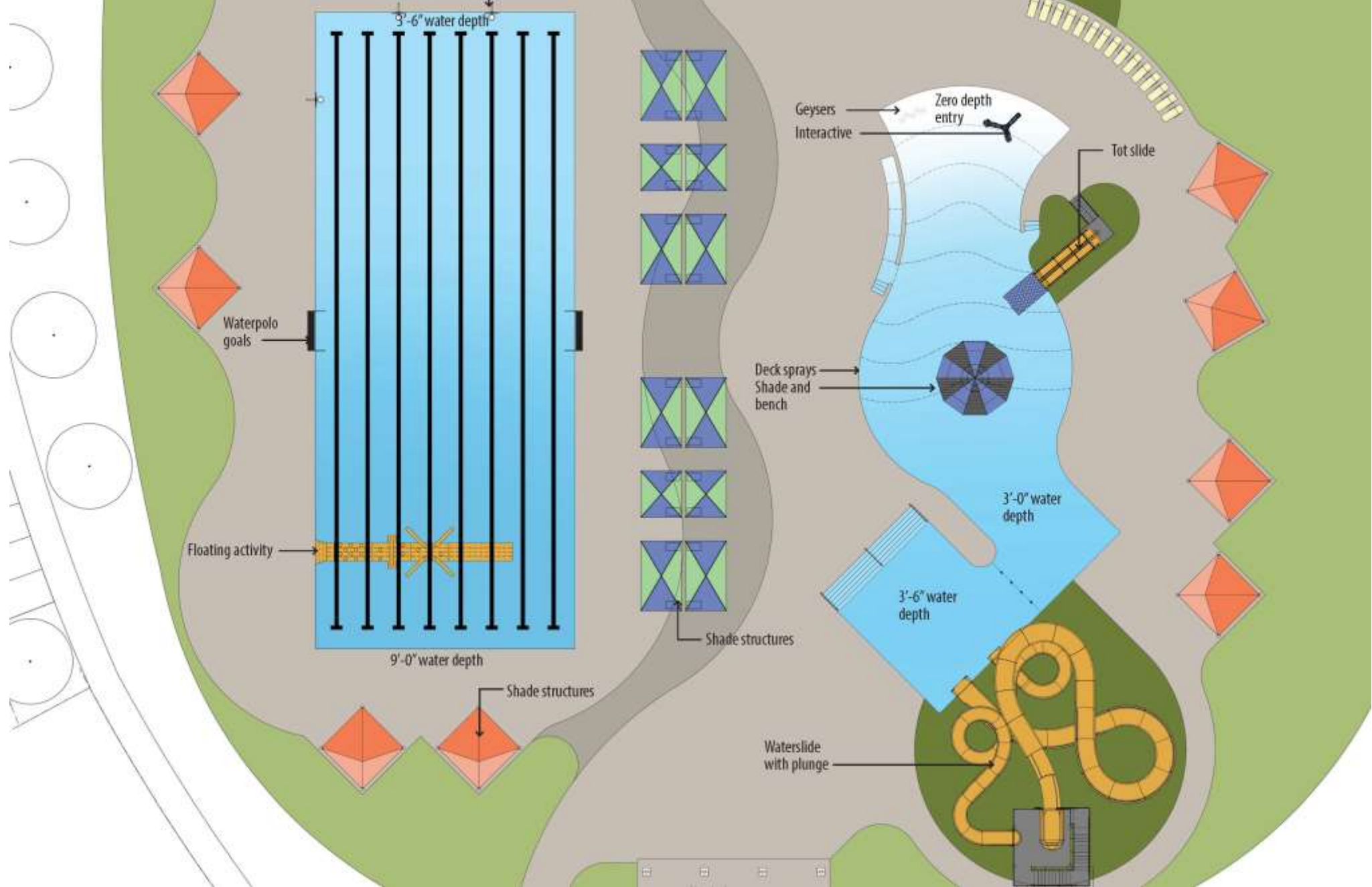


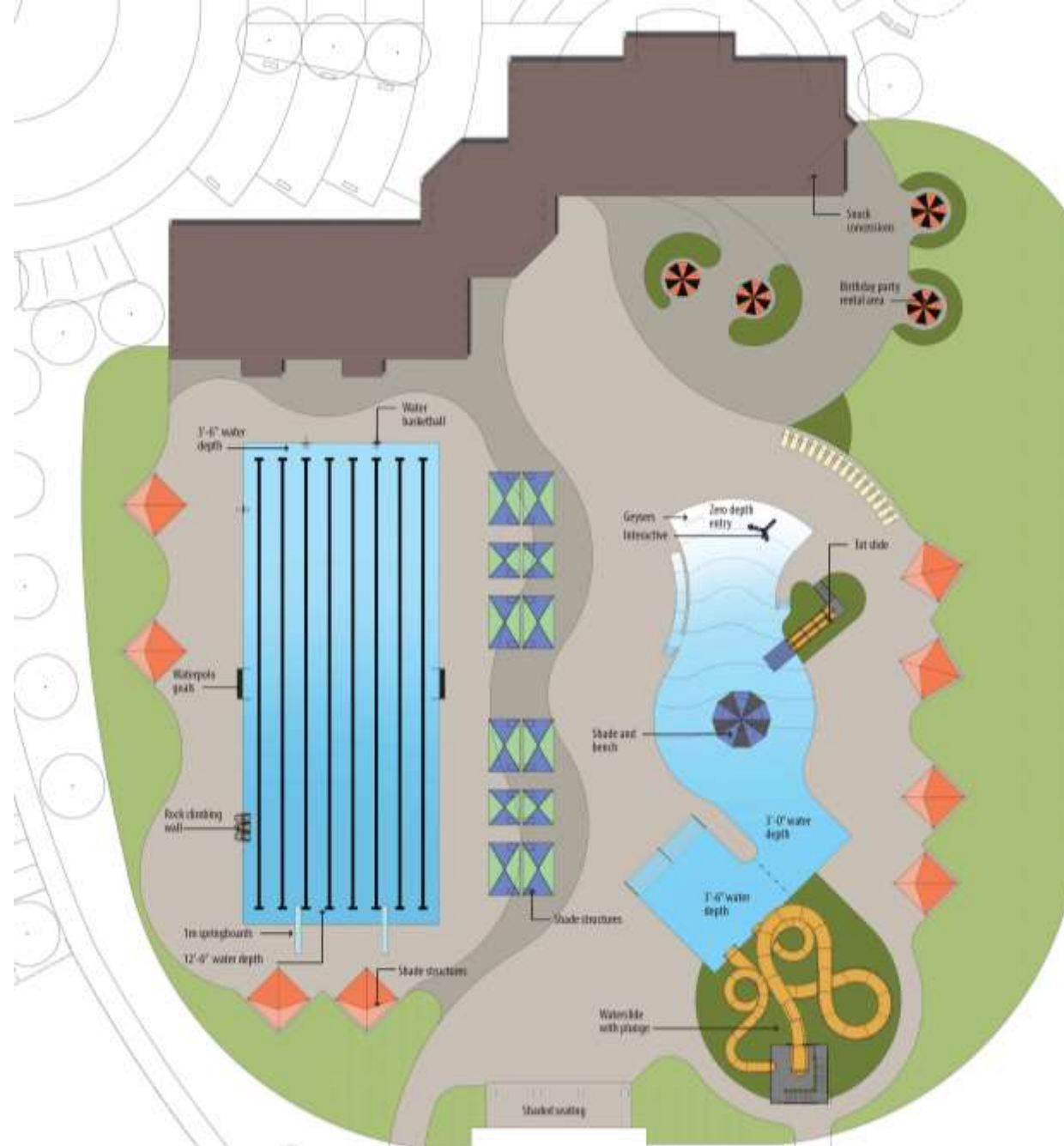
WTI

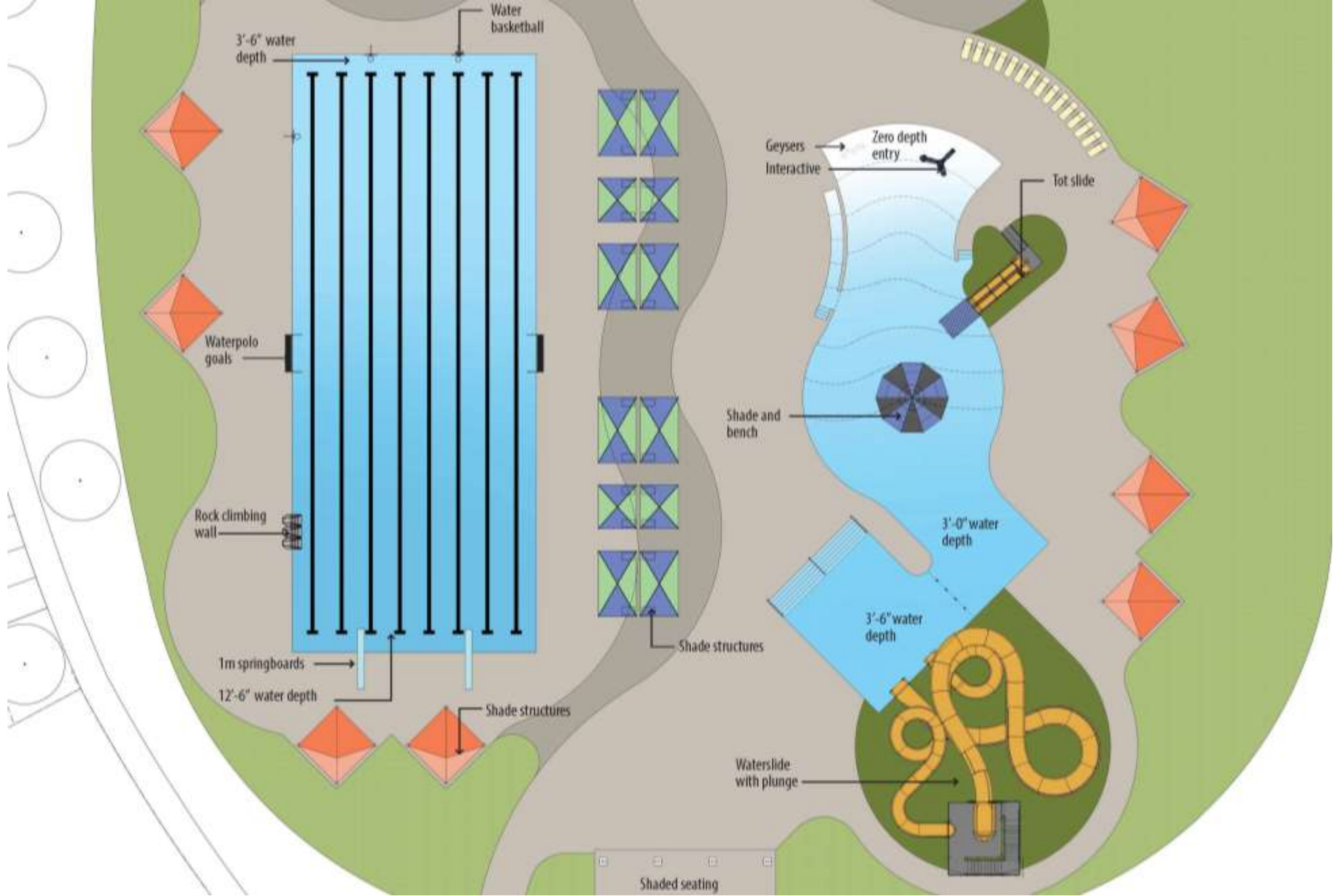
WATER TECHNOLOGY INC.
MSA PROFESSIONAL SERVICES // Enabling people to positively impact the lives of others.

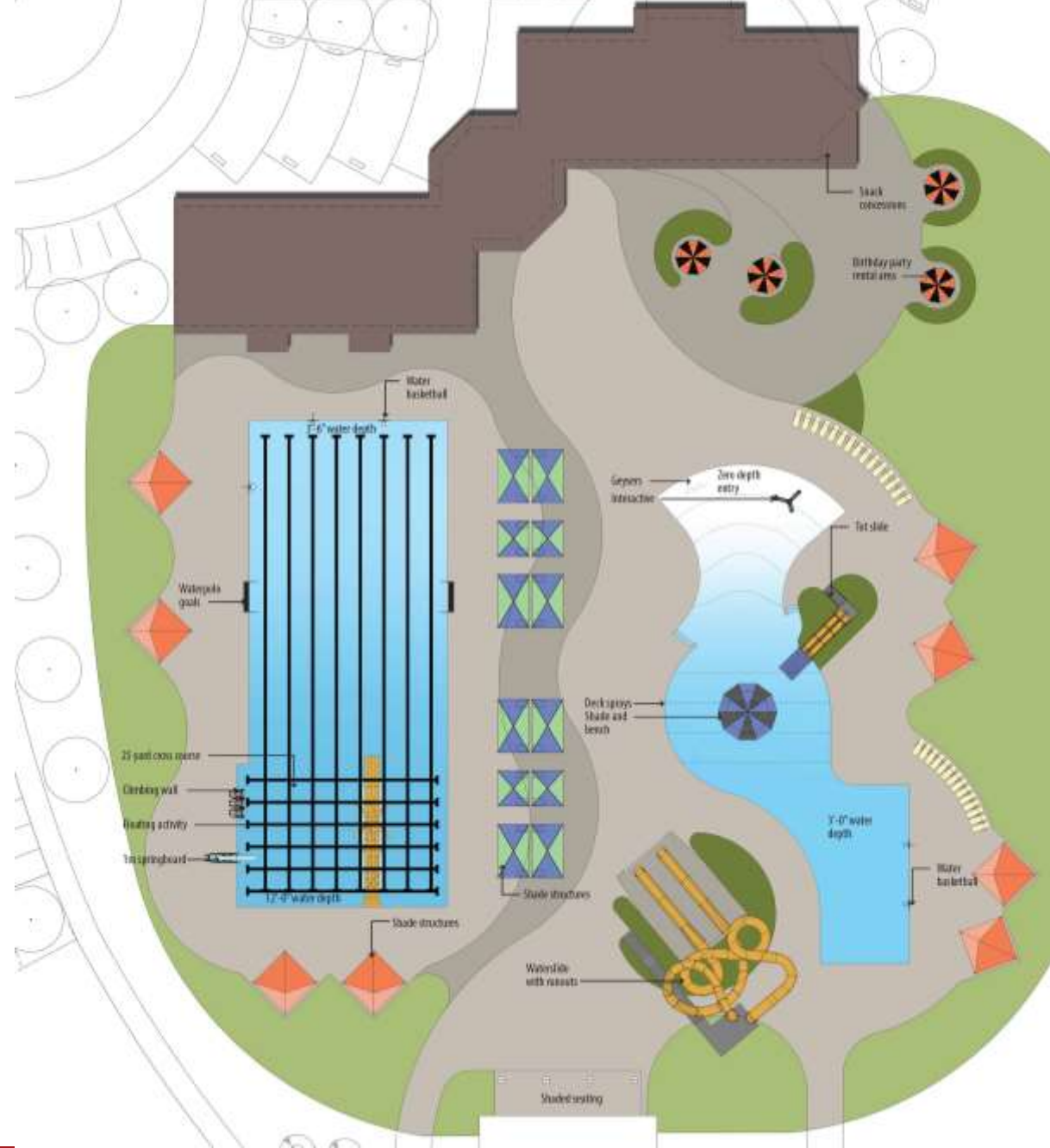
WORLD LEADERS IN AQUATIC PLANNING, DESIGN AND ENGINEERING

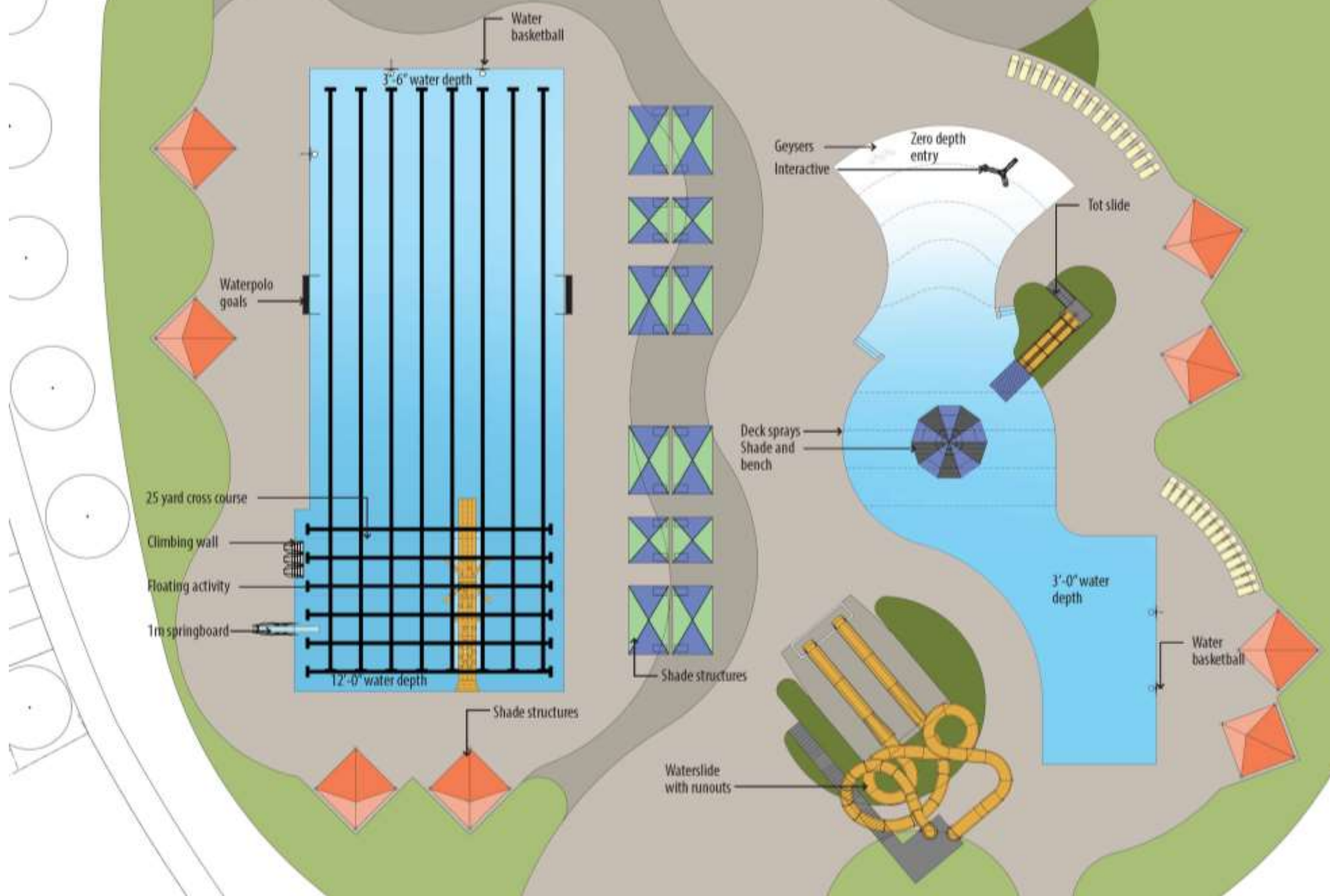












Please Share Your Comments & Input

- Comments will be accepted **until Friday, March 11, 2016.**
- **E-mail:** City of Appleton's website at www.appletonparkandrec.org
- **In Person:** At the Parks, Rec and Facilities Management Department
 - 1819 Witzke Boulevard inside Appleton Memorial Park.
 - The office is open Monday-Friday from 8:00 a.m.-3:30 p.m.
- **Tonight's Open House:**
 - Participate in Discussion Groups
 - Leave a Comment Card

Preliminary Design Presentation

- **Next Step:**

Further Development of the Preliminary Design

- **Opportunity to Review:**

The Preliminary Design will be presented for comment to the

Park & Recreation Committee on Monday, March 21, 2016 @ 6pm.



THANK YOU!



PLEASE JOIN OUR DISCUSSION GROUPS

ERB PARK & SWIMMING POOL



