



HISTORIC STRUCTURE OR HISTORIC SITE DESIGNATION
APPLICATION TO THE
CITY OF APPLETON
100 N. APPLETON STREET
APPLETON, WI 54911

This application and more information can be found on-line at
www.appleton.org/departments/planning.

530 S. VULCAN STREET Application # 1-07-H

HISTORIC or COMMON NAME: (if any) Replica of 1st Hydro-Electric Plant

SITE ADDRESS SW end of the Lawe St bridge TAX KEY #(s) NA

LEGAL DESCRIPTION North end of Vulcan Street Right-of-way

PROPERTY OWNER(s) City of Appleton TELEPHONE 832-6173

ADDRESS/ZIP 100 N. Appleton St., Appleton WI 54911 FAX _____

APPLICANT Appleton Historic Preservation Commission

ADDRESS 100 N. Appleton St. TELEPHONE 832-6466

CITY/ZIP Appleton, WI 54911 FAX _____

ZONING: EXISTING M-2

USES: EXISTING Replica of 1st Hydro-Electric Plant Building

PROPOSED Same

PARCEL DIMENSIONS NA

STATE REASONS & JUSTIFICATION FOR HISTORIC STRUCTURE OR HISTORIC SITE DESIGNATION
Please see attached document.

Subscribed and sworn to before me this
6th day of February, 2007

Notary Public, Outagamie County

Nancy A Kohlman
Signature (SEAL)

Timothy M. Hanna
Print Name of Property Owner(s) or Applicant

My Commission Expires 07/27/08

DATE 2/6/07

Reasonable accommodations for persons with disabilities will be made upon request and if feasible.
12/04

Preapplication Conference 2/2/07 Application Complete 2/6/07

The world's first water-powered electric generator went into operation in Appleton on September 30, 1882. It was, and remains, one of the most significant engineering advancements in human history. The original generator was moved soon after it was put into operation, and was later incorporated into an upgraded system in the Appleton Pulp and Paper Company on Water Street. The replica of the 1st hydro-electric plant was built by the Wisconsin Michigan Power Company in 1932 to commemorate the 50th anniversary of the original plant's opening. The building is an exact replica of the original and the hydro-electric generator itself, although non-operational, it is fully outfitted with period equipment. In 1977 the American Society of Civil Engineers, the American Society of Mechanical Engineers, and the Institute of Electrical and Electronics Engineers named the replica a National Historic Engineering Landmark.

Community Development

Memorandum

TO: Kurt Craanen, Inspections Supervisor
DeAnn Brosman, City Assessor
Cindi Hesse, City Clerk

FROM: ~~DA~~ Don Harp, Principal Planner

DATE: March 23, 2007

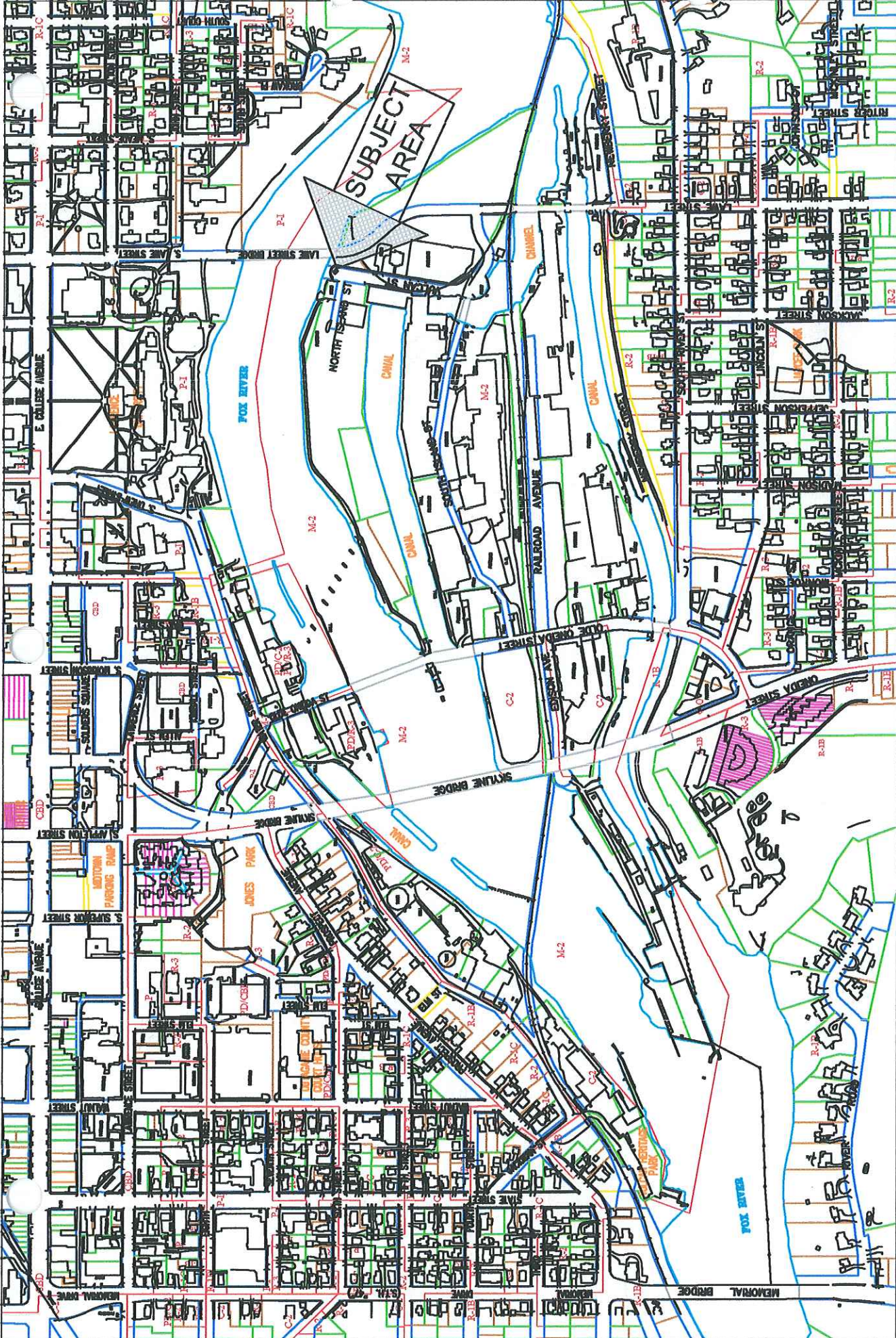
RE: ***The Replica Building of the 1st Hydroelectric Central Station - 530 South Vulcan Street -
LOCAL HISTORIC STRUCTURE NOMINATION***

Pursuant to Section 23-677(b) of the Municipal Code, this is to inform you that on March 21, 2007, the Common Council designated the following building as a Local Historic Structure.

The Replica Building of the 1st Hydroelectric Central Station located at 530 South Vulcan Street as a Local Historic Structure.

If you have any questions, please contact me.

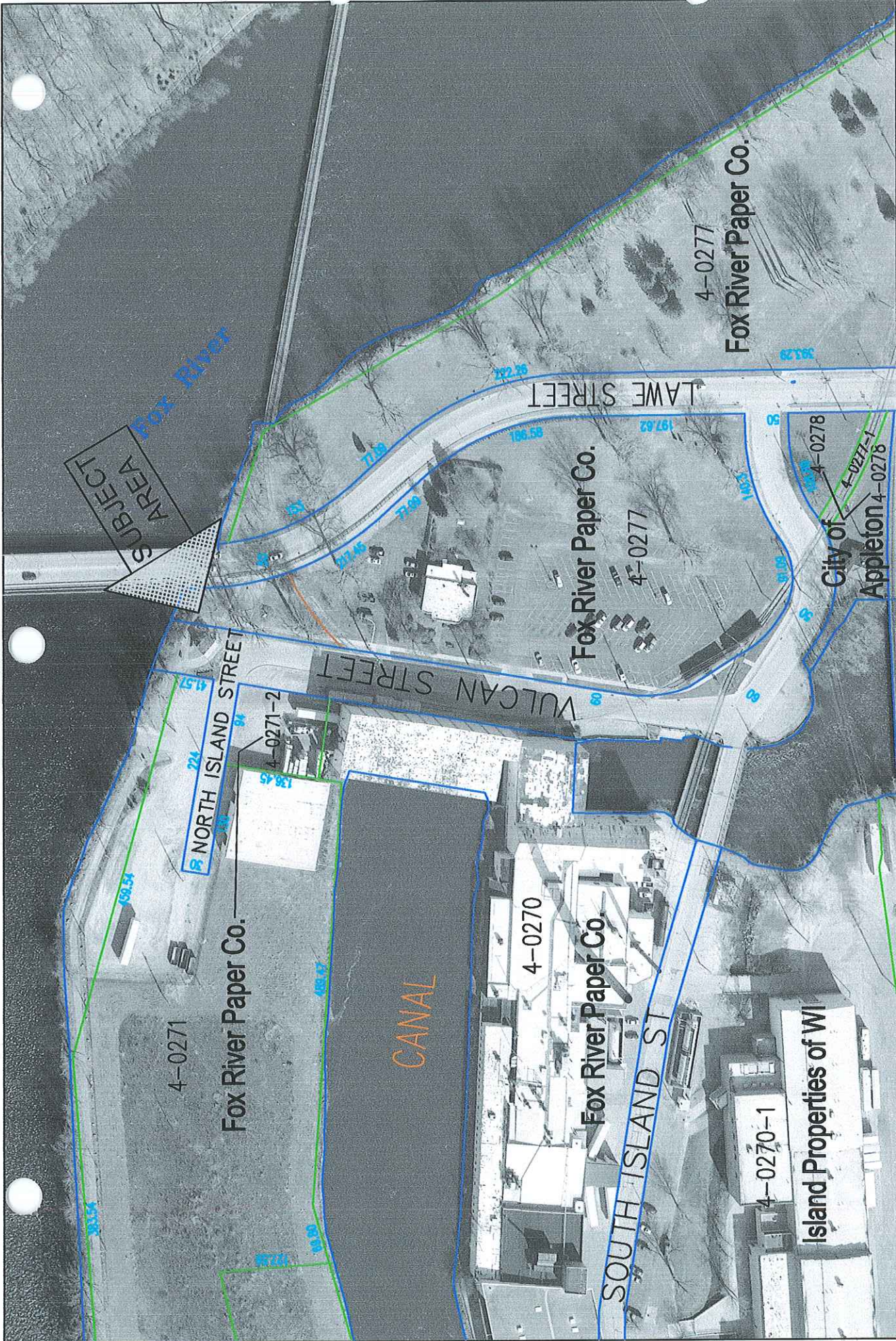
Attachments



City Plan Commission
 Appleton, Wisconsin
 02-20-07

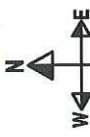
Replica of Vulcan Hydro-Electric Plant
 Historic Structure Designation
 Zoning Map

1"=600'
 prepared by:rs

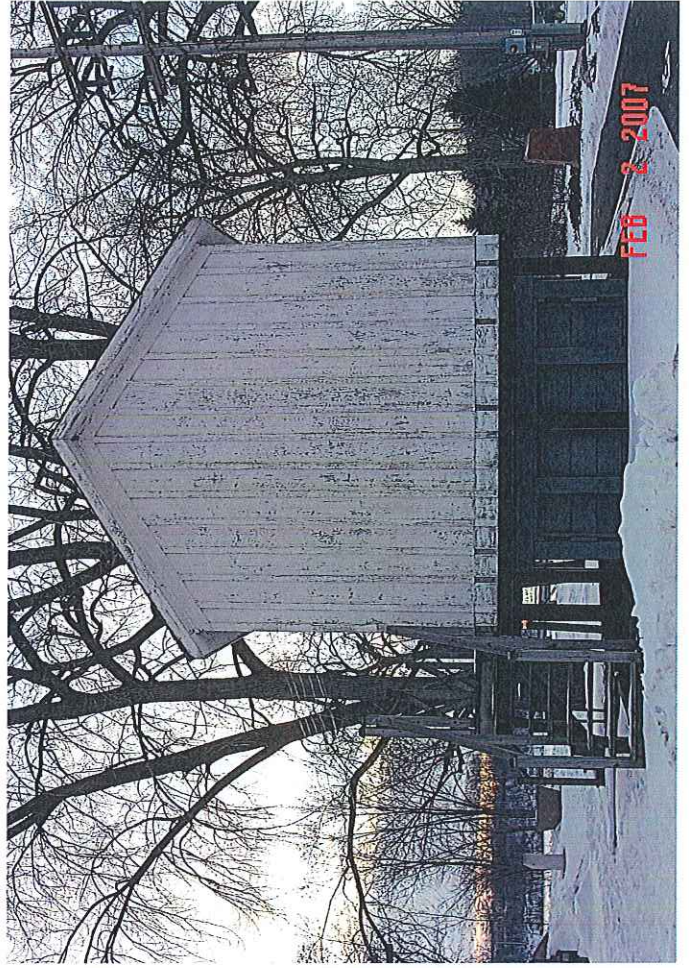


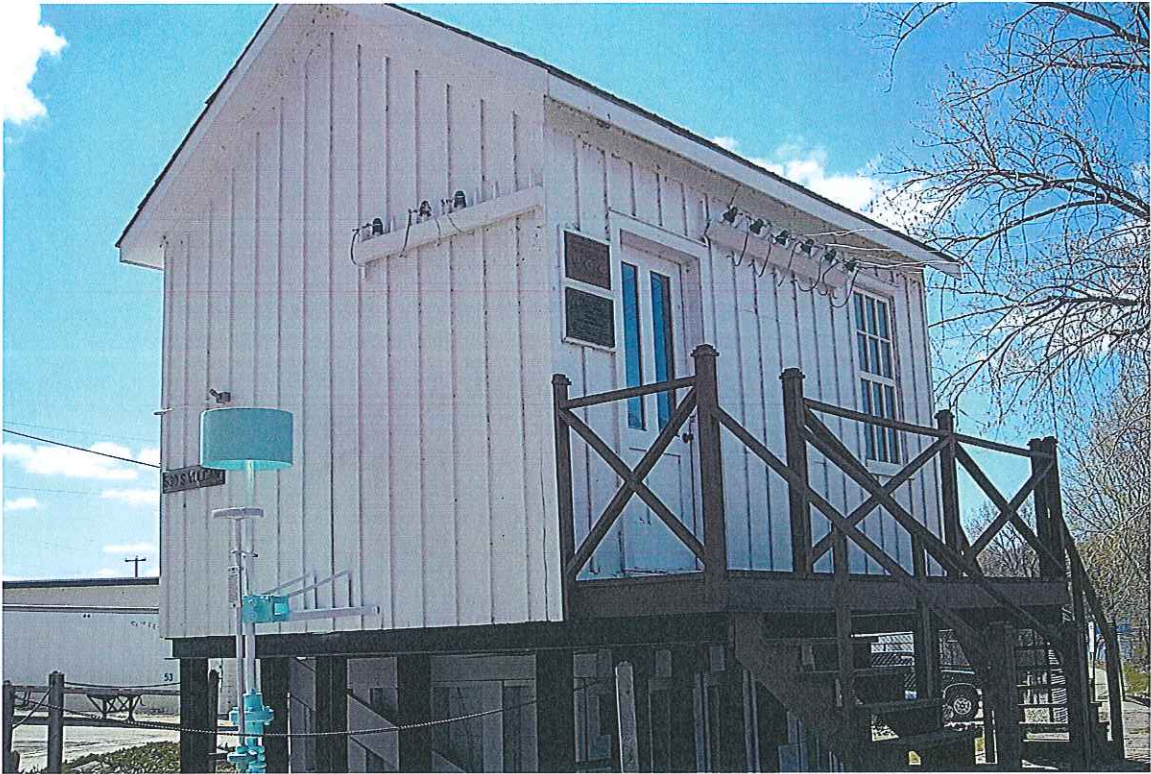
Historic Preservation
Commission
Appleton, Wisconsin
02-20-07

Replica of Vulcan Hydro-Electric Plant
Historic Structure Designation
Vicinity Map



 1"=150'
 prepared by:rs







MEMORANDUM

"...meeting community needs...enhancing quality of life."

TO: Historic Preservation Commission

FROM: Don Harp, Principal Planner

DATE: June 17, 2014

RE: Wisconsin Historic Marker Sign Text - Vulcan Hydroelectric Power
Plant Replica Building

BACKGROUND

On November 14, 2013, staff indicated the Wisconsin Historical Society confirmed the surplus funds in the amount of \$1460 from Certified Local Government Grant #55-13-51956-03 (Rogers House/Hearthstone) can be used to purchase a State Historical Marker Sign for the Vulcan Hydro-Electric Replica Building. The anticipated cost of the State Historical Sign to accommodate the wording for the sign is approximately \$1610. The cost difference between the surplus grant funds and cost of the sign will be paid utilizing funds from the Community and Economic Development Department budget.

On March 17, 2014, the Wisconsin Historical Society indicated they are working with the American Society of Mechanical Engineers Committee on History and Heritage and The Institute of Electrical and Electronics Engineers regarding fact checking the narrative language provided by the Commission. (See below)

Hydroelectric Central Station – Replica

Near this site in November 1882, a hydroelectric central station began operation. Known as the Vulcan Street Plant, it had a direct current generator capable of lighting 250 sixteen candle power lamps, each equivalent to 50 watts. The generator operated at 110 volts and was driven through gears and belts by a water wheel operating under a ten foot fall of water. Initially, the Vulcan Plant served two homes and four commercial customers.

This replica was built in 1932 by the Wisconsin/Michigan Power Co. to commemorate the 50th anniversary of the original plant opening. Like the original, it houses an Edison "K" dynamo.

In 1977, it was designated as a National Historic Civil, Mechanical and Electric Engineering landmark. The replica first stood on Olde Oneida Street and was moved to this location in 1987.

On June 4, 2014, Rick Bernstein of the Wisconsin Historical Society submitted the final draft of the text for the Wisconsin Historic Marker Sign. The Wisconsin Historical Society is requesting the Historic Preservation Commission review and approves the following text, prior to placing the order for the marker sign.

VULCAN STREET PLANT REPLICA

On September 30, 1882, the Vulcan Street hydroelectric central station began operation. Like Thomas Edison's Pearl Street plant that began operation 26 days earlier, the Vulcan Street plant featured a direct-current Edison "K" type dynamo. The Vulcan plant lit two nearby paper mills and Hearthstone, the Eastlake mansion of paper manufacturer and industrialist Henry J. Rogers. The Vulcan Street Plant represents an early example of hydro-power to generate electricity and perhaps the earliest example of a hydroelectric plant that sold electricity commercially and provided incandescent lighting service to the public. In 1932, to commemorate the 50th anniversary of the original plant opening, this replica was constructed by the Wisconsin-Michigan Power Company. Like the original, it housed an Edison "K" dynamo. In 1987 the building was moved here from Olde Oneida (now South) Street.

Erected 2014

Wisconsin Historical Society

City of Appleton

Actual – 890 Characters w/spaces

Maximum (estimated) – 848 Characters w/spaces

rab/5-30-14

RECOMMENDATION

Staff recommends that the Historic Preservation Commission approves the text as submitted from the Wisconsin Historical Society.

FINAL APPROVED LANGUAGE

VULCAN STREET PLANT REPLICA

On November 25, 1882, the Vulcan Street Hydroelectric Central Station began operation. The Vulcan Street Plant featured a direct-current Edison "K"-type dynamo and lit the homes of A. L. and H. D. Smith, five or six mills, a blast furnace, and other nearby homes with Edison bulbs. The Vulcan Street Plant represents an early use of hydropower to generate electricity and perhaps one of the earliest examples of a hydroelectric plant that sold electricity commercially and provided incandescent lighting service to the public. In 1932, to commemorate the 50th anniversary of the original plant opening, this replica was constructed by the Wisconsin-Michigan Power Company. Like the original, it houses an Edison "K" dynamo. In 1987, the building was moved here from South Oneida (now Olde) Street.

Erected 2014

Wisconsin Historical Society

City of Appleton