

INTERDEPARTMENTAL HEALTH IN ALL POLICIES TEAM

Dean Gazza

Karen Harkness

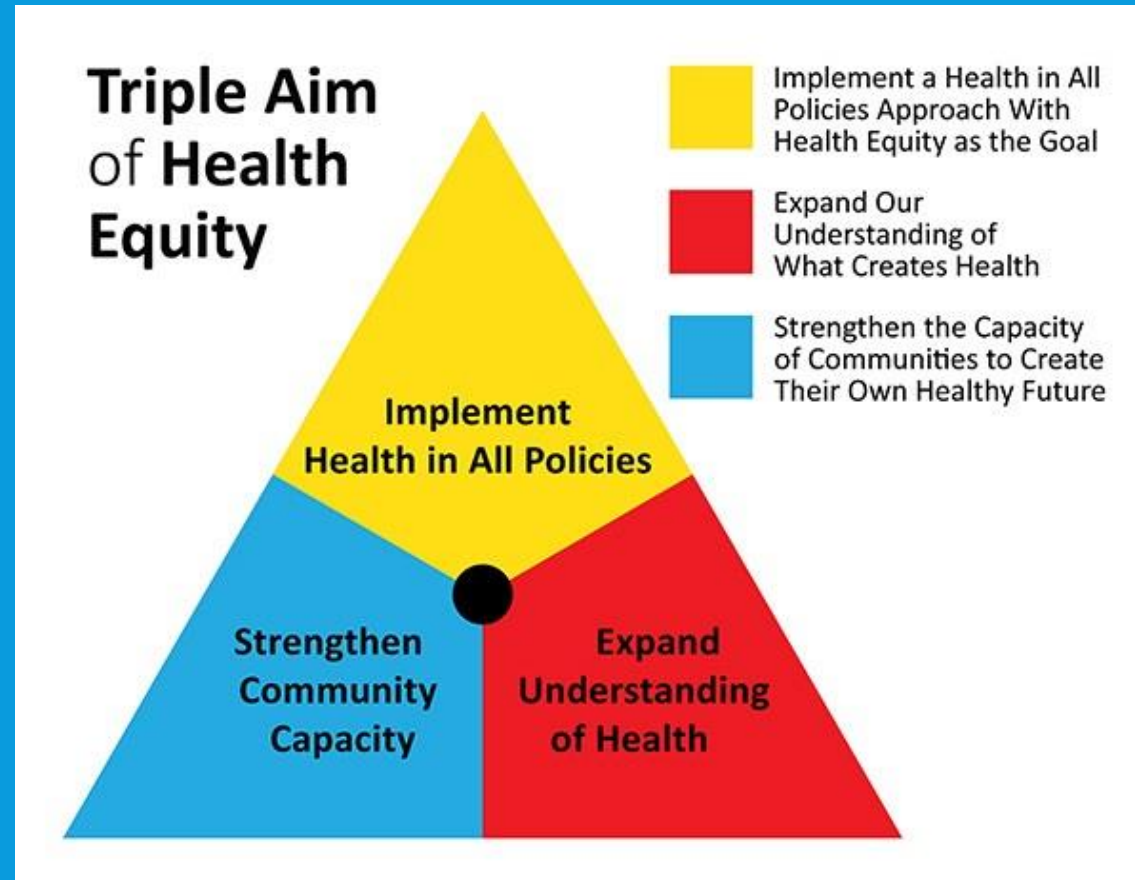
Karen Nelson

Ronald McDonald

Paula Vandehey

Kurt Eggebrecht

HEALTH IN ALL POLICY ORDINANCE



DEFINITIONS: HEALTH

- Health is a state of complete physical, mental and social well-being and not merely the absence of disease or infirmity.
- World Health Organization

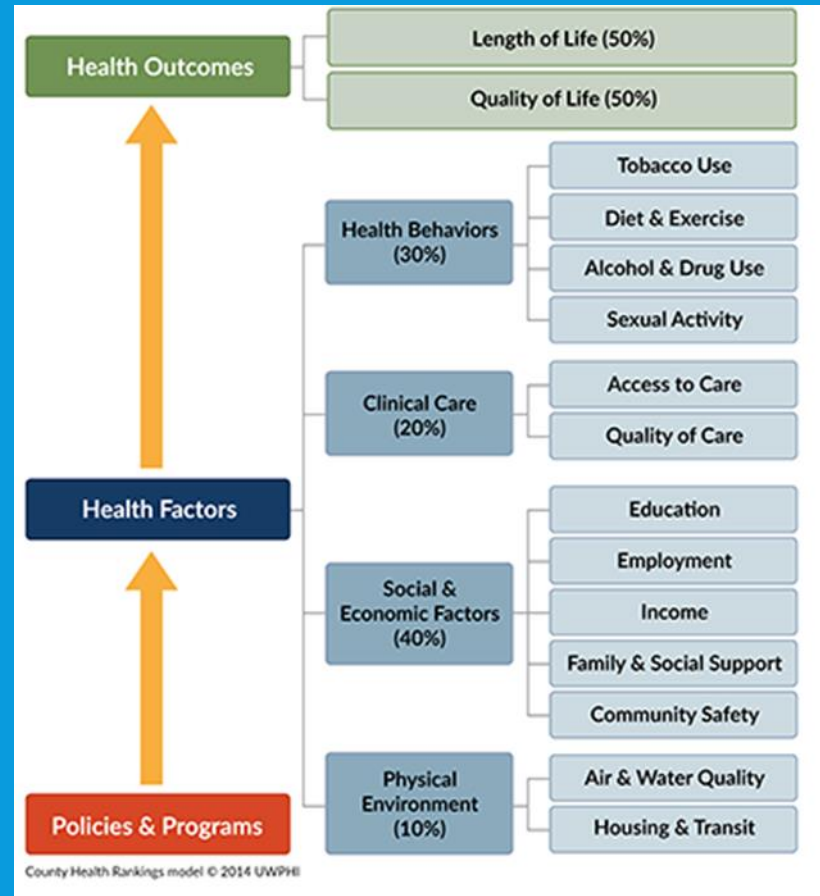
DEFINITIONS: HEALTH INEQUITIES

- Health inequities are differences in health status and mortality rates across population groups that are systemic, avoidable, unfair, and unjust.
- Margaret Whitehead

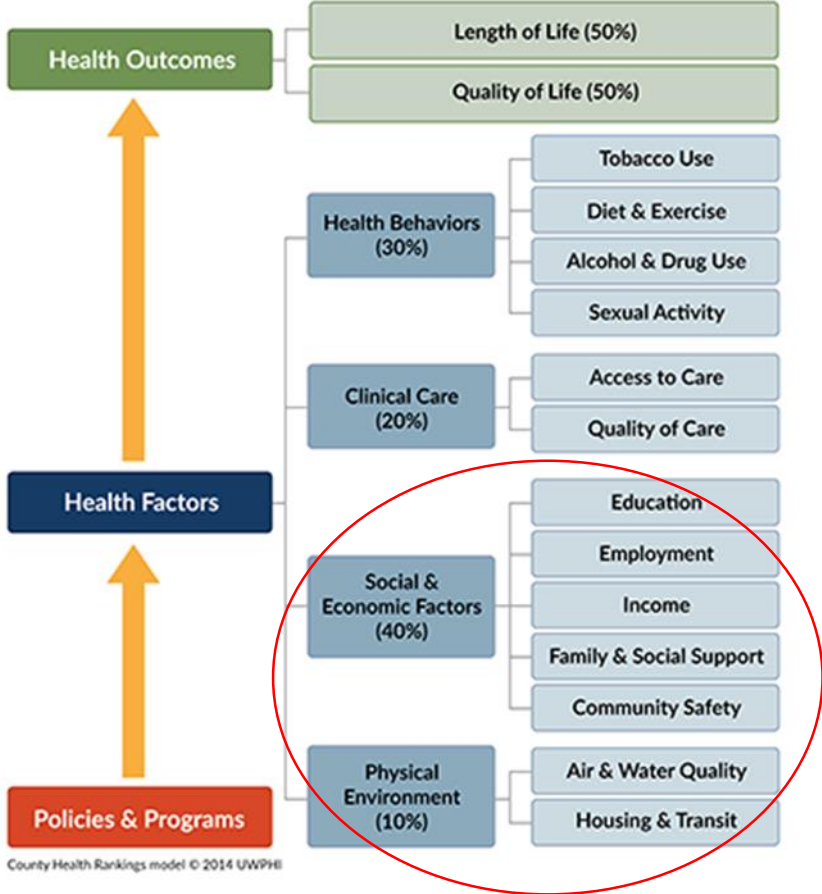
DEFINITIONS: HEALTH EQUITY

- Health equity means that everyone has a fair and just opportunity to be as healthy as possible. To achieve this, we must remove obstacles to health — such as poverty, discrimination, and deep power imbalances — and their consequences, including lack of access to good jobs with fair pay, quality education and housing, safe environments, and health care.
- Adapted from Paula Braveman and colleagues

COUNTY HEALTH RANKINGS MODEL



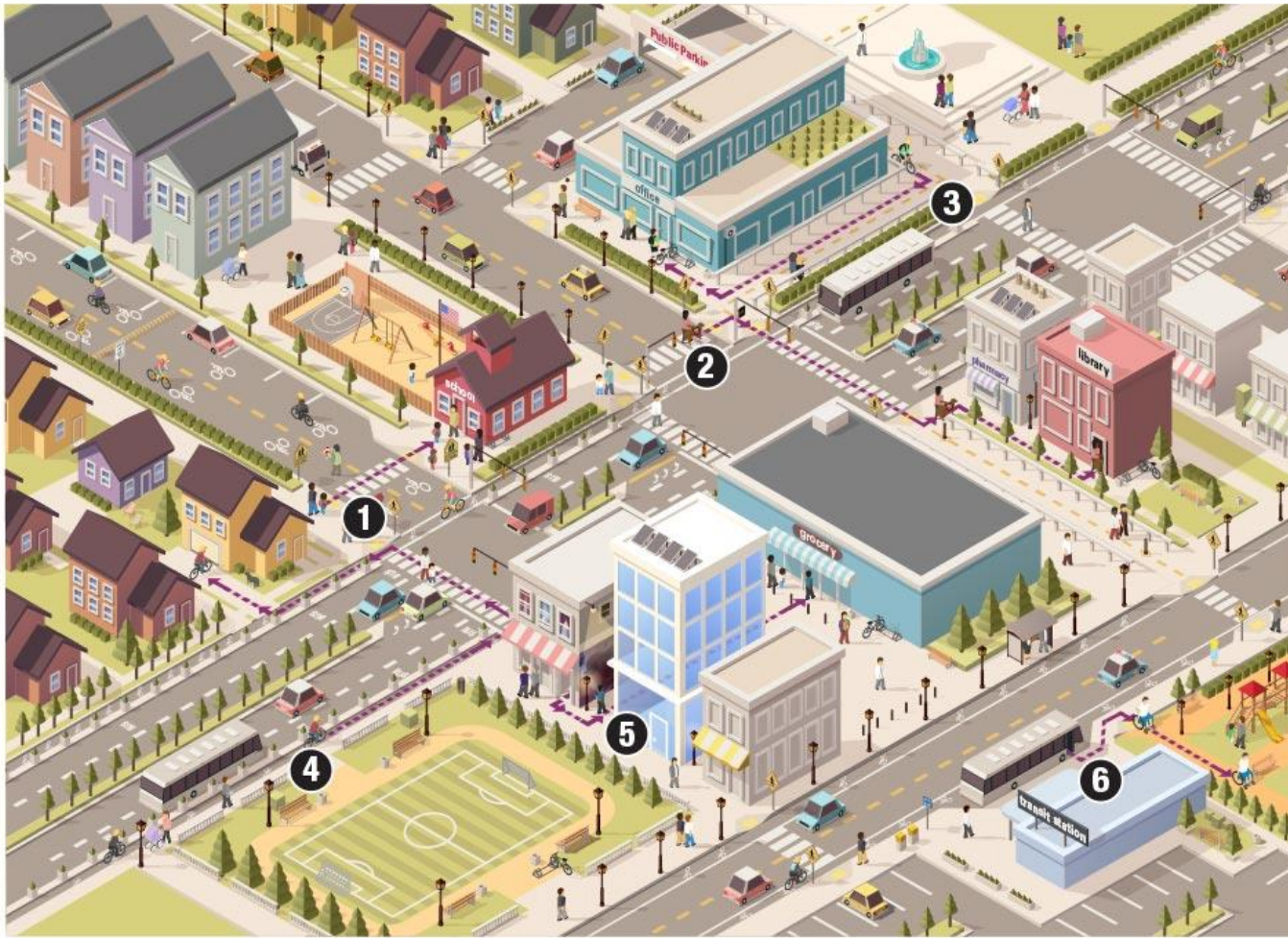
WHAT SHAPES HEALTH?



TRANSPORTATION ACTION PLAN

Strategy document will be a living plan that is designed to grow over time as progress is made and the needs of the community change.

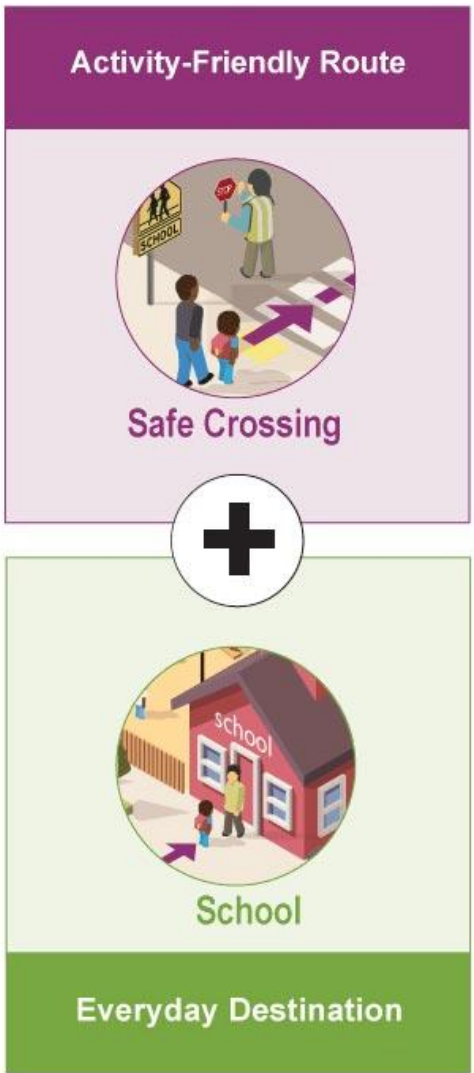
Connecting Activity-Friendly Routes to Everyday Destinations



Select thumbnail images below to highlight each example of an activity-friendly route connected to a destination:

1. Safe Crossing to a School
2. Crosswalk to a Library
3. Shared-Use Path to a Worksite
4. Protected Bike Lane to a Home
5. Attractive Alley to a Grocery Store
6. Bus Stop to a Park

Connecting Activity-Friendly Routes to Everyday Destinations



Connecting Activity-Friendly Routes to Everyday Destinations



Activity-Friendly Route



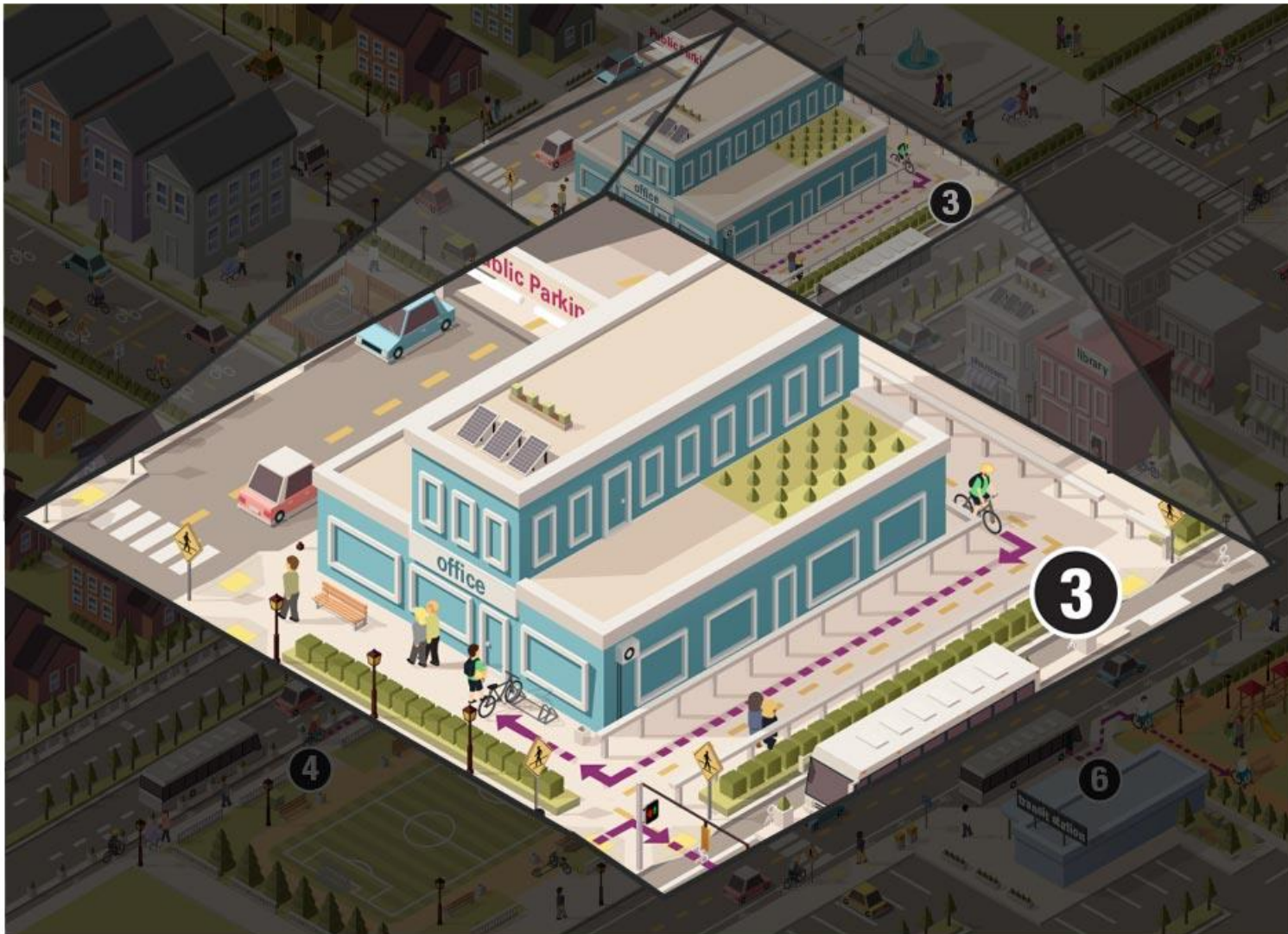
Crosswalk



Library

Everyday Destination

Connecting Activity-Friendly Routes to Everyday Destinations



Activity-Friendly Route



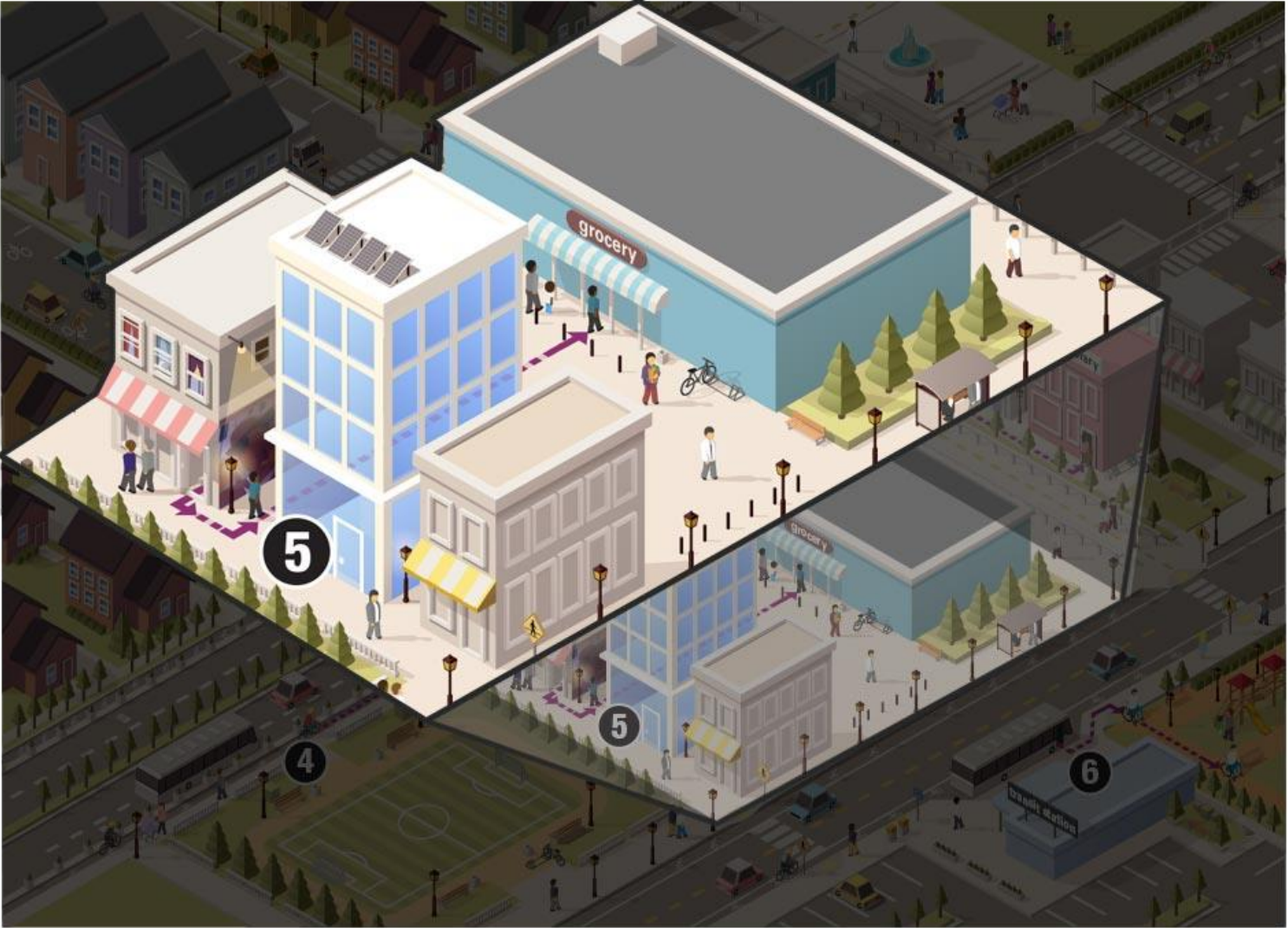
Shared-Use Path



Worksite

Everyday Destination

Connecting Activity-Friendly Routes to Everyday Destinations



Activity-Friendly Route



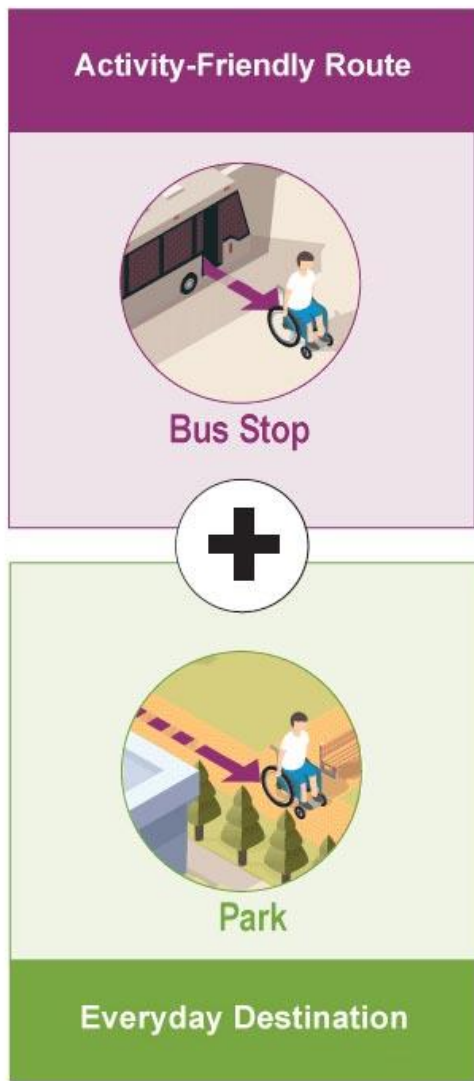
Attractive Alley



Grocery Store

Everyday Destination

Connecting Activity-Friendly Routes to Everyday Destinations



NEXT STEPS- THE ASK

- Review Health in All Policy Team work plan in detail
- Spend time internally and Identify Action/Plan/Policy/Programs to add to this work plan related to transportation
- Commit to ongoing health equity learning
- Continue to champion HiAP Ordinance
- Seek opportunities to engage directly with stakeholders to close health gaps