

Public Works Guide

Your Annual Guide to Appleton Public Works Services



April 2022 – June 2023

Vol. 4



Did you Know...

You can find your garbage, recycling, and leaf/yard waste collection dates on the homepage of our website under “My Property Info”.

Any questions regarding paying your Utility Bill, updating your account information, or setting up your final read can be completed by our Finance Department. They can be reached at (920) 832-6442.

ROAD CLOSURES

You can check if a road is closed or under construction on the City’s Road Report page. On the homepage of our website, click on “Road Report”. This map will show you the roads impacted, what work is being done, and the estimated start and end date of the project.

STREETLIGHTS

WE Energies maintains a majority of the streetlights in the City of Appleton. If you are looking to report a streetlight outage or an issue with a streetlight, you may report this to WE Energies, online at <https://www.we-energies.com/slo/default.aspx>

The City of Appleton maintains most of the streetlights that are mounted on black or metal poles and are located outside of residential subdivisions. Outages or issues with these lights should be reported to the Department of Public Works at (920) 832-5580. If you are unsure which category the streetlight falls under, please report the issue to (920) 832-5580.

AUCTION ITEMS

On occasion, the City of Appleton has used surplus items for sale. These items can range from small material goods to large pieces of equipment. To view or bid on items, visit our website under “Online Services,” and click on the “Surplus City Items” link.

DIGGERS HOTLINE

Before you start tackling your outdoor projects, be sure to contact Diggers Hotline to have the underground utility lines marked. The purpose is to identify and locate the lines that might interfere with your work and/or cause damage or injury. Requests must be submitted three working days prior to digging. You can submit requests by calling 811 or online at diggershotline.com

SIDEWALK POETRY

The City of Appleton has been transforming the city’s sidewalks into an open poetry book. By using our current sidewalk maintenance program, we are stamping poems into the new sidewalk squares throughout the city. A map of all the poem locations can be found on our website at <https://www.appleton.org/government/public-works/admin-engineering>

Operations & Traffic Division
2625 E. Glendale Ave.
(920) 832-5580

Engineering, Parking, &
Inspections
100 N. Appleton St.
(920) 832-6474

Monday—Friday
8:00 AM– 4:30 PM
(Closed on City Holidays)

Connect with Us!

www.appleton.org

[Facebook.com/appletonDPW](https://www.facebook.com/appletonDPW)

[Twitter.com/appletonDPW](https://twitter.com/appletonDPW)

GARBAGE

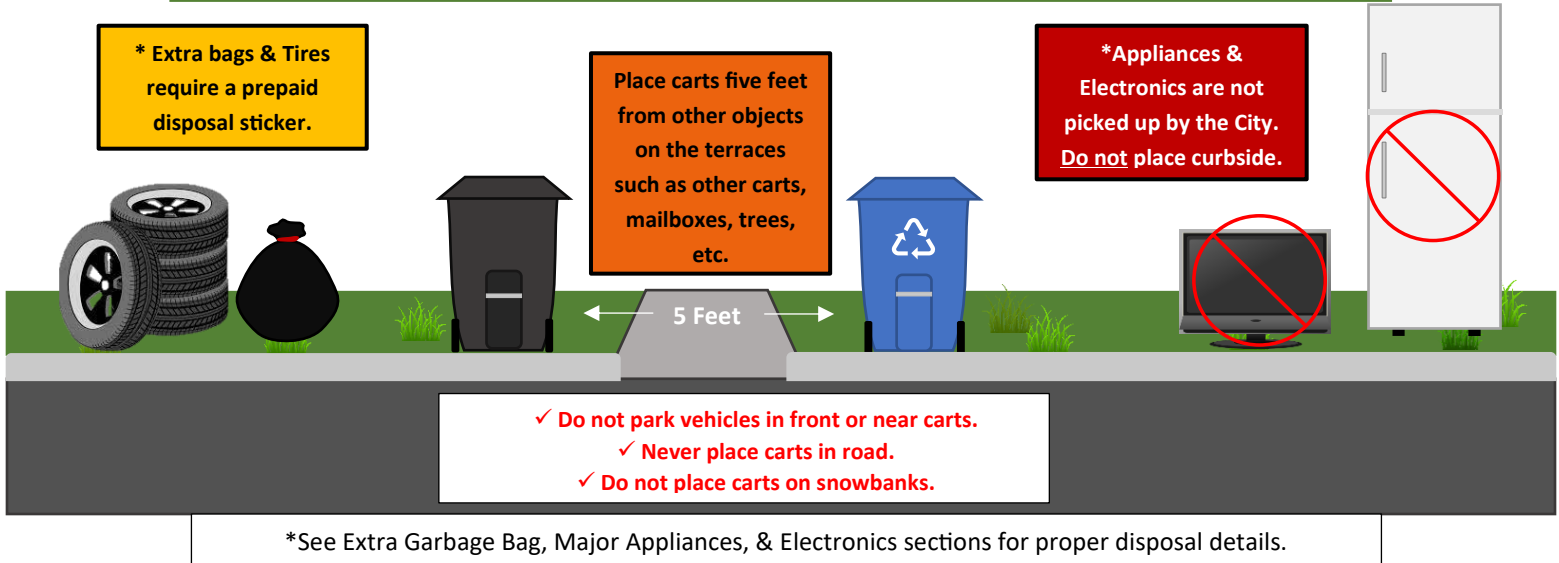
GARBAGE PICK UP – is provided weekly from City supplied garbage carts.

- Please use plastics bags for items inside City garbage carts.
- Place City garbage cart out for pick up the night before your scheduled day.
- The handle of cart should face your house.
- Any bags that cause the lid not to close on garbage carts are considered extra garbage bags. See “Extra Garbage Bags” section for details.

GARBAGE CART FEES – Garbage carts are available in three different sizes to fit individual household needs. Charges are included on your quarterly City Service Invoice (i.e. Utility Bill).

35-gallon cart	\$0.50/ week	Holds approximately 2 bags
65-gallon cart	\$1.00/ week	Holds approximately 4 bags
95-gallon cart	\$1.50/ week	Holds approximately 6 bags

If your garbage cart is too small, too large, or needs repair, the property owner should call 920-832-5580.



EXTRA GARBAGE BAGS – Because garbage cart charges are based on volume, bagged garbage or trash that does not fit in the cart must be marked with a prepaid disposal sticker.

- Bags should weigh less than 45 pounds.
- Unlimited bags of extra household garbage are picked up each week with a **\$4 per bag disposal sticker**.
- Put extra bags approximately five feet from garbage carts.
- The disposal sticker should be attached to bags and be visible to drivers.

MAJOR APPLIANCES – All major appliances can be brought to the Glendale Yard Waste Site for a fee if you are unable to have the item(s) hauled away privately. Please see Yard Waste Site information (pg. 7) for site hours and drop-off fee information.

SPECIAL GARBAGE PICK UP – If you need to dispose of items because of moving or just cleaning, please contact a private dumpster or waste hauling company. We also encourage you to donate the items to local thrift or resale stores.

ELECTRONICS – Electronics **must** be recycled and dropped off at an E-Waste collector; items will **not** be picked up with regular garbage per Wisconsin state law. Many electronic items can contain harmful materials but also contain valuable reusable materials. **Items to e-cycle: computers, monitors, TVs, laptops, printers, copiers, fax machines, DVD and VCR players, other video display devices, keyboards and mice, speakers, and cell phones.**

For a list of E-Waste collectors and recyclers, visit the WI DNR website at <https://dnr.wisconsin.gov/topic/ecycle/> Electronics can also be brought to Outagamie County Recycling & Solid Waste. Visit recyclemoreoutagamie.org for more information.

GRASS PUNCH TICKETS, DISPOSAL STICKERS, & TIRE TAGS –

Are available for purchase at the following locations:

- | | |
|-----------------------------------|-----------------------|
| Public Works (Municipal Building) | 2625 E. Glendale Ave. |
| City Hall | 100 N. Appleton St. |
| Ace Hardware | 500 E. Northland Ave. |
| Kitz & Pfeil Hardware | 1919 E. Calumet St. |
| Northside Hardware | 1415 N. Richmond St. |

GRASS CLIPPINGS – Are **not** picked up curbside. They may be taken to the Glendale Avenue or the Whitman Avenue Yard Waste Sites. Drop-off fees are \$4/bag or \$40/punch card (10 punches).



Check www.appleton.org “My Property Info” for garbage & recycling pick up days specific to your address.

FREE LARGE ITEMS CURBSIDE COLLECTION

Large items are picked up for all residential properties for free, **April through September**. We will collect up to **2 approved items** on your regular garbage day, the weeks opposite your recycling week.

Changes!

Only items that are too large to fit into City supplied garbage carts when empty qualify. Place items listed below 5 feet away from your cart the night before your garbage day. One truck will come for the City supplied garbage carts and another truck for the large items.

Approved items that we will collect -

- **Household furniture** including chairs, couches (not sleeper sofas), tables, dressers, TV stands, etc.
- **Metal** such as bed frames, shelving, bicycles, grills (propane tanks removed), lawnmowers (gas/ oil removed), etc. Items must not be longer than 4 ft long.
- **Carpeting**- see the required specifications below.
- Garbage bags and tires **always** require a prepaid disposal sticker.

Items NOT included in collection - Appliances, mattresses/ box springs, large glass doors, windows, hot tubs, pools, trampolines, pianos, exercise equipment, basketball hoops, tractor tires, hazardous waste, yard waste, concrete, shingles, electronics (see "Electronics" section for details), and boxes/recyclables (recycling is not part of this collection).

- **Home improvement materials** are not included as part of this collection. These materials include toilets, sinks, tubs, cabinets, lumber/ wood, drywall, decking, etc. You may put smaller items in your City supplied garbage cart as long as they fit completely inside, with the lid closed.

Apartments or properties with privately contracted metal dumpsters do not qualify for this service. Please contact that company to inquire about their disposal options or consult your landlord or property manager.

CARPET – Carpet is picked up curbside on your regular garbage day during free large item weeks.

- Cut carpet into four-foot strips and roll up.
- Rolls should weigh less than 45 pounds.
- Tie or tape rolls.

Carpeting removed by a contractor must be disposed of by the contractor. If you are unable to meet the restrictions for placing items curbside, they can be taken to Outagamie County Recycling & Solid Waste or the Glendale Yard Waste Site, for a fee.

Consider donating your new or gently used building materials, furniture, appliances, housewares, and tools to the Habitat ReStore. Donated items get a second chance at being used while reducing waste in the landfill. Visit their website at <https://foxcitieshabitat.org/restore/> to learn more about accepted donations, inquire about scheduling a pickup, and facility hours.



CONSTRUCTION MATERIALS – If you are unable to fit items in your garbage cart, repurpose or donate the items you can bring them to Outagamie County Recycling & Solid Waste or the Glendale Yard Waste Site, for a fee.

WASTE OIL, FILTERS, & ABSORBENTS – These items must be recycled. Visit www.RecycleMoreOutagamie.org or call Outagamie County Recycling & Solid Waste at (920) 832-5277.

BATTERIES – Household disposable batteries can be disposed of in your garbage cart. Vehicle batteries can be dropped off at our Glendale Yard Waste Site or Outagamie County Recycling & Solid Waste for free. Any Wisconsin retailer that sells these batteries may also take them.

LATEX PAINT – Consider giving usable paint to friends, neighbors, theater groups, or housing assistance organizations. If you must dispose of latex paint, please follow these directions:

- **For small amounts:** Remove the lid and let dry in the can. Occasionally stir the paint.
- **For larger amounts:** Line a cardboard box with a plastic trash bag. Layer an absorbent material (kitty litter, sawdust, shredded newspaper) on bottom, pour a layer of paint and repeat as necessary. Once dry, dispose of the trash bag and dry, empty paint cans in your regular trash.

OIL OR LEAD BASED PAINTS - Should be taken to a hazardous waste facility. (See Household Hazardous Waste section)

TIRES – Tires 18" in diameter or less are picked up curbside on your regular garbage day with a **prepaid disposal tag**.

- Tire tags cost \$5 each.
- There is a limit of four (4) tires per household.
- Tires can also be brought to the Glendale Avenue Yard Waste Site. Fees and limits apply.



YARD WASTE SITE FREE TIRE WEEKENDS

April 15th – 18th

&

September 16th – 19th

Tires can be brought to the Glendale or Whitman Yard Waste Sites for free on these weekends. Tire size of 18" or less and 4 tires per household will be accepted (rims included).

ITEM DISPOSAL

FLUORESCENT BULBS – All fluorescent bulbs, including compact fluorescent bulbs (CFLs), contain small amounts of mercury. Tube type fluorescent bulbs and CFLs may be brought to Outagamie County Recycling & Solid Waste for a fee.

MEDICAL SHARPS DISPOSAL – Wisconsin law requires all citizens to safely manage needles, lancets, and syringes. **It is illegal to put sharps in the trash or with recyclables.** Used and unused sharps must be placed in an acceptable container and taken to a registered collection facility. Visit www.dnr.wi.gov for locations in the Fox Cities.

PRESCRIPTION DRUGS & OTHER MEDICINES – May be disposed of at select local pharmacies. Place pills into sandwich sized, sealable bags. Keep all liquids, creams, and powders in original containers. Visit www.RecycleMoreOutagamie.org for more information and locations.

HOUSEHOLD HAZARDOUS WASTE – Some types of waste are too hazardous for landfills and require special disposal. Hazardous wastes include: pesticides, herbicides, poisons, acid, lead and oil-based paints, automotive and rechargeable batteries, mercury, and some cleaning materials. This program is limited to households only and is held on select dates May through October. For dates, times, or to schedule an appt., call (920) 832-5277 or visit www.RecycleMoreOutagamie.org. If you are unable to attend, you may take your hazardous waste directly to the Brown County Hazardous Waste Facility free of charge. Visit www.BrownCountyRecycling.org or call (920) 492-4950.

AMERICAN FLAG DISPOSAL – You may bring worn or damaged American flags to the Glendale Yard Waste Site and all six Fire Stations free of charge. We will deliver the unserviceable flags to the American Legion for proper disposal.



CHRISTMAS TREE DISPOSAL

TREE FOR A TREE

Bring Christmas trees to the Glendale Yard Waste Site during open hours within the scheduled weeks to participate in Appleton's Annual "Tree for a Tree" program:

January 2 – January 23, 2023

Participation is limited to City of Appleton residents. One coupon, redeemable in April for a white spruce seedling, will be issued for each tree brought to the site.

There is no limit.

CHRISTMAS TREE CURBSIDE COLLECTION

Christmas trees will be collected curbside **during the week of January 9-13, 2023. Please have curbside by Sunday, January 8th.** In case of bad weather, crews may be needed for snow and ice control. Collection of trees will then be extended into the following week as needed, until skipped areas have been collected. If your tree becomes buried with snow, please assist operations by unburying it. After that, trees must be brought to the Glendale Yard Waste Site or removed from the curb until the Spring Yard Waste Collection. **Please remove plastic tree bags and lights.**

RECYCLING

HOW TO PLACE RECYCLING AT THE CURB:

- Empty and rinse all bottles and containers.
- **Do not** place garbage in your recycling bin.
- Place items loosely in your recycling cart. Do not place items in bags.
- Cardboard boxes should be flattened and cut to no larger than 2' x 2' pieces.
- Keep your recycling cart five feet away from obstructions such as your garbage cart, mailbox, utility poles, trees and parked vehicles. If possible, put garbage and recycling on opposite sides of the driveway.
- Be sure to have recyclables curbside the **night BEFORE** your pick-up day (pick up begins at 3:30 a.m.).
- All recyclables must fit into your cart with the lid closed. For extra recyclables, you may:
 - Save for a future pick up day.
 - Ask a neighbor if they have extra room in their cart.
 - Bring to the **free** County drop off site located at 1919 Holland Road, (920) 832-5277, Monday through Friday, 7:00 a.m. to 3:30 p.m. and Saturdays, 7:00 a.m. to 12:00 p.m.

RECYCLABLE ITEMS:

- Plastic bottles and containers (bottles, jars, jugs, containers, & lids)
- Metal (aluminum, steel, tin bottles/ cans)
- Paper (newspaper, books, cardboard, milk, or soup cartons)
- Glass (food/ beverage bottles & jars)

NON-RECYCLABLE ITEMS:

- Plastic bags, wrap or film
- Motor oil bottles
- Styrofoam™
- Paper contaminated by food or grease
- Tissue or gift wrap
- Aluminum pans or foil (take to a local scrap metal dealer)
- Ceramics, dishes, or windows
- Empty paint cans
- Shredded Paper

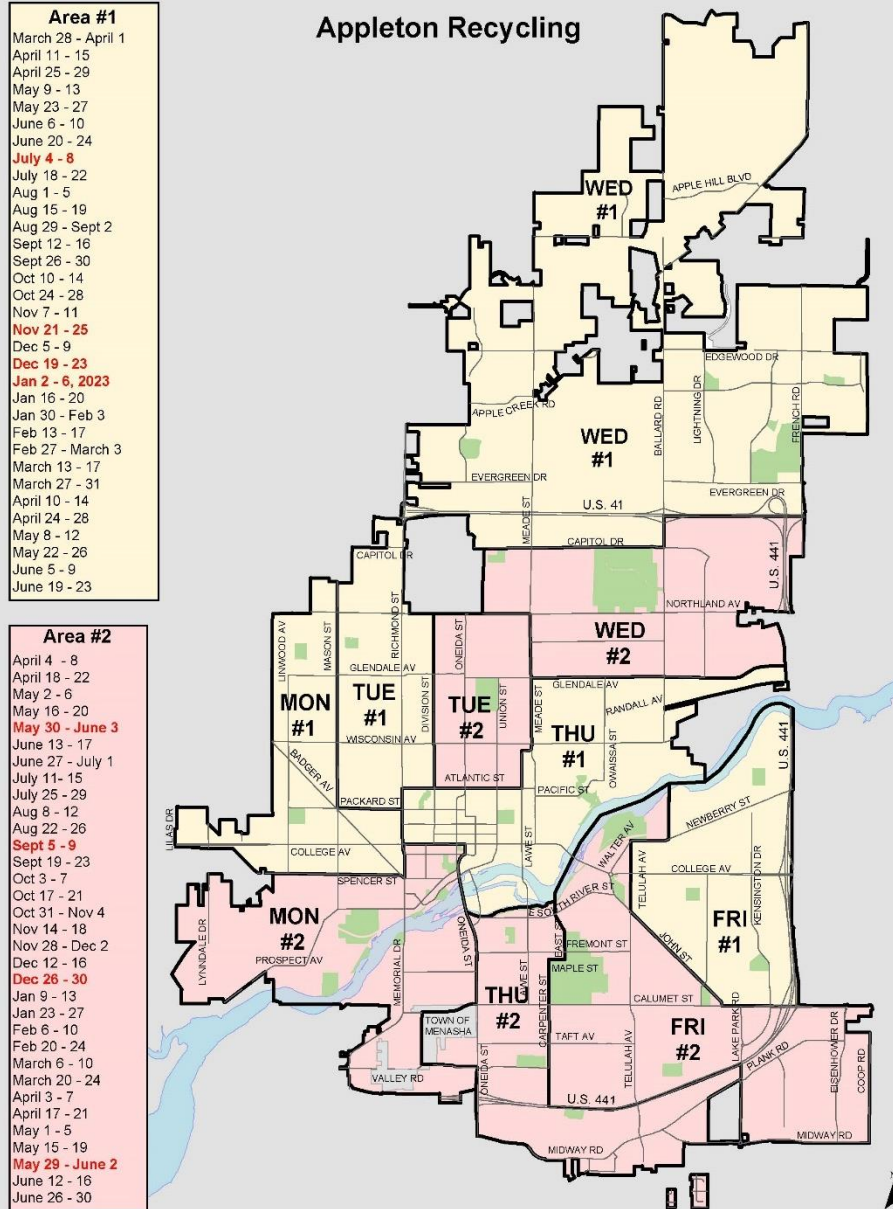
RECYCLING

RECYCLE! IT'S THE LAW!

Outagamie County Recycling & Solid Waste contracts with Orion Waste Solutions to provide curbside collection for households within the county, including all of Appleton. All items should be placed inside the City-supplied recycling cart for automated curbside pick up according to the schedule.

Recycling is collected every other week on your regular garbage day.

The map shows regular pick up days and designates recycling collection in areas #1 and #2. Dates in red indicate a holiday week, use the Holiday Pick Up Schedule to the right to know your schedule.



HOLIDAY PICK UP SCHEDULE RESIDENTIAL GARBAGE & RECYCLING

Your **Holiday Recycling** pick up may not be on the same day as the **Holiday Garbage** pick-up. Holiday pick up times may be earlier or later than your normal time. Check the map and color-coded schedule list for your regular recycle pick up dates. Only dates listed below are affected by the holiday.

REGULAR PICK UP DATE IS...	THEN YOUR GARBAGE DATE IS...	THEN YOUR RECYCLING DATE IS...
Memorial Day 2022 – recycling area #2		
Mon, May 30	Tue, May 31	Tue, May 31
Tue, May 31	Tue, May 31	Wed, June 1
Wed, June 1	Wed, June 1	Thur, June 2
Thur, June 2	Thur, June 2	Fri, June 3
Fri, June 3	Fri, June 3	Sat, June 4
Independence Day 2022 – recycling area #1		
Mon, July 4	Tue, July 5	Tue, July 5
Tue, July 5	Tue, July 5	Wed, July 6
Wed, July 6	Wed, July 6	Thur, July 7
Thur, July 7	Thur, July 7	Fri, July 8
Fri, July 8	Fri, July 8	Sat, July 9
Labor Day 2022 – recycling area #2		
Mon, Sept 5	Tue, Sept 6	Tue, Sept 6
Tue, Sept 6	Tue, Sept 6	Wed, Sept 7
Wed, Sept 7	Wed, Sept 7	Thur, Sept 8
Thur, Sept 8	Thur, Sept 8	Fri, Sept 9
Fri, Sept 9	Fri, Sept 9	Sat, Sept 10
Thanksgiving 2022 – recycling area #1		
Thur, Nov 24	Wed, Nov 23	Fri, Nov 25
Fri, Nov 25	Mon, Nov 28	Sat, Nov 26
Christmas Eve 2022- recycling area #1		
Fri, Dec 23	Tue, Dec 27	No Change - Collection as Normal
Christmas Day 2022- recycling area #2		
Mon, Dec 26	Tue, Dec 27	Tue, Dec 27
Tue, Dec 27	Wed, Dec 28	Wed, Dec 28
Wed, Dec 28	Wed, Dec 28	Thur, Dec 29
Thur, Dec 29	Thur, Dec 29	Fri, Dec 30
Fri, Dec 30	Fri, Dec 30	Sat, Dec 31
New Year's 2023 – recycling area #1		
Mon, Jan 2	Tue, Jan 3	No Change - Collection as Normal
Easter 2023 - No Change to Regular Schedule		
Memorial Day 2023 – recycling area #2		
Mon, May 29	Tue, May 30	Tue, May 30
Tue, May 30	Tue, May 30	Wed, May 31
Wed, May 31	Wed, May 31	Thur, June 1
Thur, June 1	Thur, June 1	Fri, June 2

For recycling pick up concerns - contact Orion Waste Solutions at (920) 759-0501 or 1-888-759-0501.

For recycling questions - contact Outagamie County Recycling & Solid Waste at (920) 832-5277, visit www.RecycleMoreOutagamie.org or email at recycle@outagamie.org.

WATER HYDRANT FLUSHING - Public Works schedules hydrant flushing twice a year, weekdays between 6:30 a.m. and 4:30 p.m. If you see crews in your area, use little, or no water for an hour if possible. If you find discoloration, stop using the water, wait about an hour and then draw off the discolored water through a cold-water tap only, preferably using the bathtub faucet.

AQUAHAWK ALERTING

AquaHawk Alerting is a **FREE** service for City of Appleton residents that will allow you to monitor your water usage and receive alerts.

- ✓ Know about leaks before they cause costly damage!
- ✓ See exactly how much water your family is using.
- ✓ Set usage thresholds, to avoid being surprised by a high bill.
- ✓ Access your account from any internet connected device – your smartphone, laptop, or desk computer.
- ✓ Opt-in service lets you choose how you want to be contacted – e-mail, text, or phone.

Register today. It's easy!

<https://www.appleton.org/residents/water/customer-portal>



During cold winter months, water pipes can freeze. To reduce this possibility, take the following precautions:

- Turn off water to outside faucets, drain, and leave faucets open.
- Make sure all basement windows are securely closed and repair broken windowpanes.
- Repair cracks or holes in the foundation. Insulate along floor joists.
- Make sure all rooms containing water pipes are kept above freezing temperature, especially if the house will be vacant.
- During subzero weather, leave cabinet doors open under sinks, especially if pipes are on an outside wall.
- If the water meter is enclosed in a cabinet, leave the door open so that heat can circulate during the winter months.

If your water pipes freeze, we recommend using a hair dryer to thaw them. Never use a blowtorch or any open flame to thaw pipes.

If you plan on being away from your home for an extended period of time (i.e. going out of state for the winter months), we recommend winterizing your house. Give us a call to disconnect your water meter to reduce the chance of the meter and water pipes freezing.

Visit www.appleton.org or call (920) 832-5580 with questions.

INSPECTIONS DIVISION

SHEDS

Sheds are considered an accessory building that have specific permit and location requirements. Buildings must be less than 150 square feet. Sheds must only be located in the side or rear yard, be at least three feet from the lot line, and at least three feet away from other buildings. Permits are required for sheds that are over 50 square feet; anything less than that are exempt. Contact our Inspections Division at (920) 832-6411 to submit plans or for any further questions.



FENCES

Are you considering adding a fence or wall to your property? If so, did you know our Inspections Team can assist you with the \$40 permit? Bring a drawing of your lot showing where the fence/wall will be located during the office hours of 8:00 – 9:30 a.m. Monday through Friday at 100 N. Appleton Street.



PREVENTING SEWER BACKUPS

The City does everything we can to prevent sewer backups from occurring but flooding of sewer lines and buildings may still occasionally occur because of heavy rainfall, water main breaks, or sewer line blockages.

What can you do? Install a backflow preventer on your sewer line. A backflow preventer is a mechanical means to prevent sewage from backing up into your building if the sewer main in the street becomes overwhelmed.

Also, **contact your insurance company today.** Most standard homeowner's policies do not cover sewer backups. Ask to have the sewer backup coverage added to your policy.

Have questions? Call our Inspections Division at (920) 832-6411 and ask to speak with one of our Plumbing Inspectors.

STREET SWEEPER

Street sweeping schedules vary throughout the city depending on street usages and whether the water runoff will be directly returned to the local waterways or if it will be sent to a stormwater pond. Areas that are contributory to a stormwater pond will be swept every 6 weeks, while those that are directly returned to lakes or streams are swept every 3 weeks. Due to commercial and industrial traffic on some of the city streets, sweeping is done every 10 days in those locations to help remove pollutants, heavy metals, and garbage before they make it into the local waterways.



TWO YARD WASTE DROP-OFF SITES

GLENDALE YARD WASTE SITE – 2625 E. Glendale Avenue

2022 Summer Season- April 1, 2022 – November 21, 2022
Friday, Saturday, Sunday, & Monday **8 a.m. – 5:45 p.m.**

2022-2023 Winter Season- November 26, 2022 – April 3, 2023
Friday, Saturday, Sunday, & Monday **9 a.m. - 4:45 p.m.**

2023 Summer Season- April 7, 2023 – November 20, 2023
Friday, Saturday, Sunday, & Monday **8 a.m. – 5:45 p.m.**

WHITMAN YARD WASTE SITE – 701 S. Whitman Avenue

2022 Season - April 1, 2022 – November 21, 2022
Friday, Saturday, Sunday, & Monday **8 a.m. – 5:45 p.m.**

Closed for Season - November 22, 2022 – April 3, 2023

2023 Season - April 7, 2023 – November 20, 2023
Friday, Saturday, Sunday, & Monday **8 a.m. – 5:45 p.m.**

The Whitman Site accepts grass clippings, brush, yard waste and motor oil only. No antifreeze or household waste accepted. Attendant on-site.

GLENDALE SITE ACCEPTED ITEMS & DROP-OFF FEES (Cash or Check Only)	
ITEM	FEES
Grass Clipping (30 gal. bag)	\$4 per bag
Grass Clipping Card	\$40 (10 punches)
**Branches & Brush	Free
Oil (10-gallon limit)	Free
Antifreeze	Free
Car Batteries	Free
Unserviceable American Flags	Free
*Recyclables	Free
Appliances (freon)	\$20
Appliances (non-freon)	\$15
Tires (18" diameter or less)	\$5 each
*Garbage-1 vehicle	\$15 (minimum fee)
*Garbage-1 vehicle & trailer	\$35 (minimum fee)
*Available until dumpsters at capacity ** Branches must be smaller than 6 inches in diameter & 8 feet long	

Yard Waste Sites Parameters

- Items **not** accepted-
 - Dirt or Sand
 - Sod
 - Stumps
 - Root balls
 - Branches larger than 6 inches in diameter & 8 foot long
 - Propane tanks
 - Concrete
 - Shingles
 - Oil filters
 - Electronics
 - Hazardous Waste
- Be prepared to show proof of residency to attendant.
- Loads should be tarped and secured.
- Residential waste only – no waste accepted from contractors or commercial properties.
- Animal waste is garbage; it must be bagged, and garbage fees apply.
- Loads must be manageable by persons dropping off as they are responsible for disposing of items.

Both yard waste sites will be closed on City observed holidays.

Listed are the holidays our offices and yard sites will be closed.

New Year's Day	Thanksgiving Day
Easter Day	Day after Thanksgiving
Memorial Day	Christmas Eve
Independence Day	Christmas Day
Labor Day	

SPRING YARD WASTE COLLECTION

The start of spring collection is determined by the weather. Our goal is to have 4 consecutive weeks. As soon as the dates are finalized, a public service announcement will be posted on the news and calendar sections of our website, www.appleton.org. The information will also be posted on our DPW and City Hall Facebook and Twitter pages prior to the start of the spring collection.

Yard waste will be collected from the terrace on the day following your regular garbage day, NOT from the gutter.

Yard waste must be in containers, lawn and leaf paper bags, or tied in bundles with biodegradable twine. Please do not use plastic bags, boxes, tarps, or 55-gallon fiber barrels or their liners.

- Containers should have handles, be 33 gallons or less, and weigh less than 45 pounds when full.
- Paper lawn and leaf bags can be purchased at most hardware stores and home improvement centers.
- Branches and brush must be cut to **four-foot lengths** and be bundled with biodegradable twine. Bundles must be less than two feet around and weigh less than 45 pounds. Max branch width is **three-inch diameter**.
- In spring, branches, brush, and lawn bags must be placed on your terrace, between the sidewalk and the curb, the night before collection.

Branches, yard waste, and brush can also be taken to our two yard waste sites free of charge.



2022 FALL LEAF PICK UP

During fall leaf collection, rake leaves, small yard waste, and garden debris into the areas specified below on the **Sunday night prior to your collection week**. Collections are at 2-week intervals from **October 10 through November 18**.



2022 LEAF COLLECTION MAP



Legend

ZONE 1

OCT 10-14
OCT 24-28
NOV 7-11

ZONE 2

OCT 17-21
OCT 31-NOV 4
NOV 14-18

 Zone 1 Vacuum Area
 Zone 2 Vacuum Area

Customers in **Zone 1**: Beginning Sunday, October 9 and then every other Sunday through November 6.

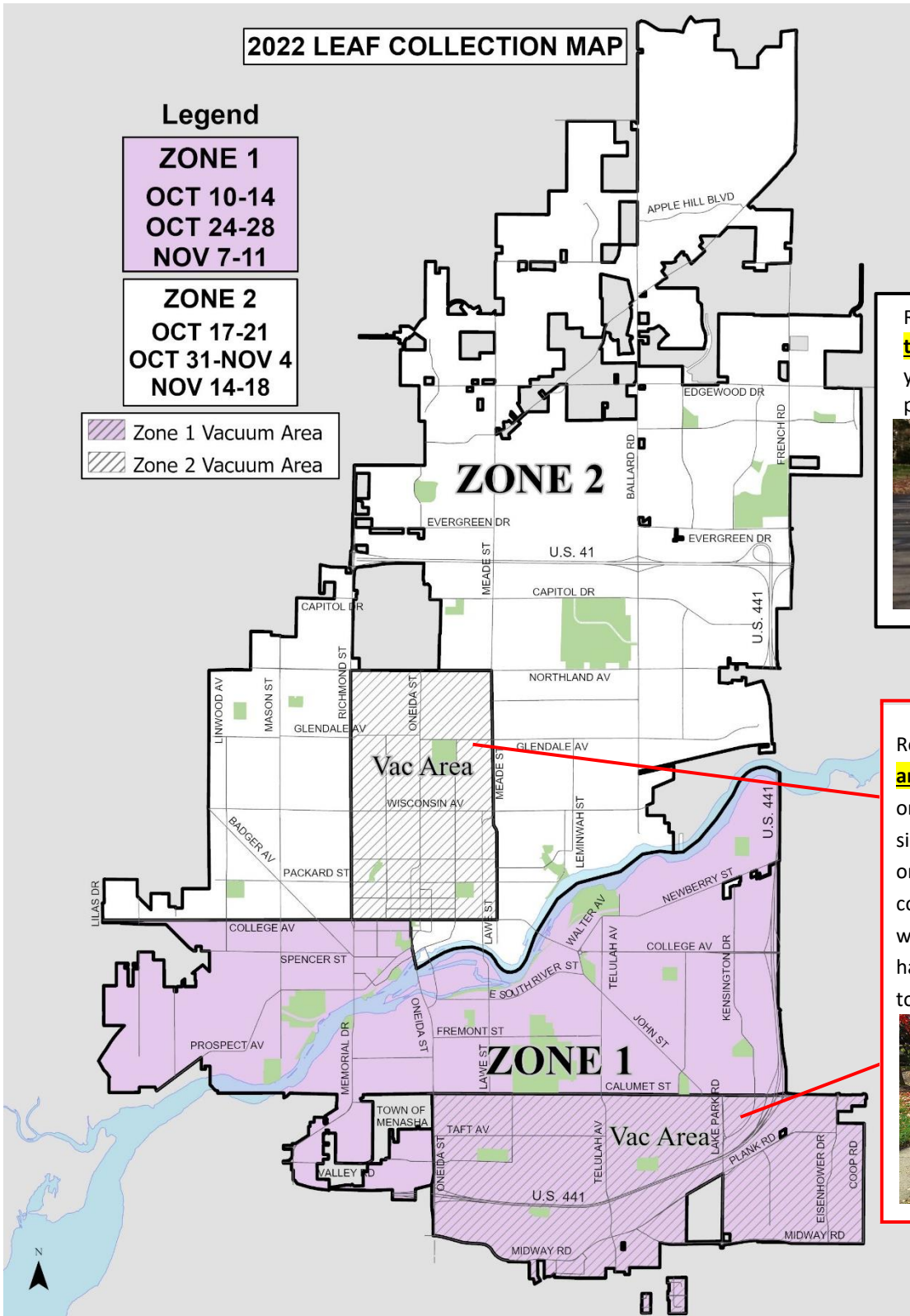
Customers in **Zone 2**: Beginning Sunday, October 16 and then every other Sunday through November 13.

Residential properties **outside of the two vac areas** need to place leaves and yard waste in the street gutter. Do not place on the terrace.



New for 2022

Residential properties **inside the two vac areas** need to place leaves and yard waste on the terrace area (between street & sidewalk). Do not place them in the street or on the sidewalk. Leaves will be collected with vacuum units and yard waste will be collected separately by hand. Do not mix these materials together.



If weather permits, there will be one additional non-scheduled pass through the city starting **November 20**. Winter may come early, and snow may prevent this additional pick up. If weather prevents the City from completing the leaf and yard waste pick up after your final collection week, residents are responsible for leaf and yard waste disposal. No additional special pick ups will be scheduled.

2022 FALL LEAF PICK UP

Branch and brush piles must be kept separate from leaf and small yard waste piles. Branches and brush must be cut down to four-foot lengths and bundled with biodegradable twine and not exceed 45 pounds. Max branch width is three-inch diameter. No containers, except lawn and leaf bags, will be collected. Bundled and bagged yard debris will be collected by hand in the vac areas. Other areas will be collected using front end loaders. Pumpkins will not be collected.

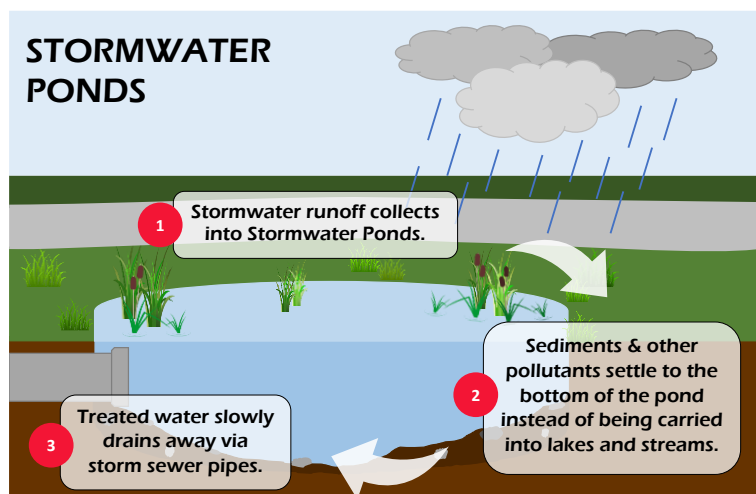
Please keep piles low and close to the curb to help protect children and not block motorists' view.

It is crucial to our leaf pick up operations to be able to work during the night. For that reason, starting on Sunday, October 9, the Police Department will not grant permission for overnight parking all week in the zone scheduled for collection. Vehicles that are illegally parked overnight (between the hours of 2:00 a.m. and 5:00 a.m.) will be subject to ticketing and towing.

Leaves on the following streets will be pushed into piles on side streets as often as possible, but due to heavy traffic, residents are encouraged to transport leaves to the yard waste sites rather than rake them into the gutter: Ballard Rd, College Ave, Oneida St, Calumet St, Wisconsin Ave, Richmond St, Newberry St, Meade St, Mason St (north of Prospect Ave) and Lawe St (from College Ave to Wisconsin Ave)

Branches and brush can also be taken to our two yard waste sites free of charge. Please see page 7 for location and hours.

STORMWATER



Stormwater Ponds are essential for flood control and water quality. Buildings and pavement cause more rain and snowmelt to run off the land surface rather than soak in, picking up pollutants along the way. The native plants growing along the shore of the ponds, which may look like weeds, are also a benefit to the pond. They prevent shoreline erosion, slow down the flow of stormwater, filter polluted runoff, and provide habitats for fish and other animals.

GRASS CLIPPINGS

Did you know that keeping grass clippings on your lawn after mowing is good for your yard and our water ways?

Letting the clippings fall into the lawn helps keep the soil moist and restores nutrients over time. Grass clippings are natural fertilizer! It contains nitrogen like what can be found in lawn fertilizer.

Additionally, keeping it out of our streets prevents it from entering our storm sewer and ending up in our water ways. Grass clipping contain phosphorus, the nutrient that feeds the algae blooms in our lakes and streams.



Get Involved in Protecting our Waterways!

Fox-Wolf Watershed Alliance offers several ways for people of all ages and abilities to get involved to help make a positive difference in your watershed. **Kids can help too!** For more information go to <https://fwwa.org/>

TERRACE TREES

Public Works plants and maintains all trees on the terrace. When planting a new tree, several factors are considered such as terrace width, location of utilities, other tree species in the neighborhood, and general growing conditions. As the tree continues to grow, we maintain the tree by evaluating it for disease and pest problems, provide proper pruning, and keep a detailed database of our urban forest.

As a City of Appleton property owner, you may request to have a tree planted on the terrace or boulevard in front of your home or business. You can also request to "donate" a tree or trees to be planted in the park of your choice as a memorial or in honor of a special person. Give us a call at (920) 832-5580 to find out more!



WINTER SNOW GUIDELINES



Winter will soon be upon us. To help make your travels safe, we offer the following guidelines:

- Please provide safe sidewalks for pedestrians. The owner or occupant of the property immediately adjacent to a public sidewalk is responsible for the snow/ice removal no later than 36 hours following the end of the snowfall. **This includes any handicap access ramps along the perimeter of the premises.**
- Snowplows can generate flying snow and salt. Please **stay back 50 feet, be patient and do not pass a plow on the right side.**
- Please **do not park vehicles on the street** following a snowfall. Plows cannot get close to the curb, causing extra plowing which costs additional tax dollars. Cars parked on the street between 2:00 a.m. and 5:00 a.m. may be ticketed and towed.
- Please **do not park in driving lanes** if snow is blocking the parking lane.
- Please do not park your vehicle at the end of your driveway in a way that would impede the City plow.
- **Do not place garbage/recycling carts on snowbanks or in the road.** Place carts in driveway openings.
- **Do not blow, plow, or throw snow onto any City street or sidewalk.** Snow blown, plowed, or shoveled onto any city right-of-way is subject to a citation.
- The City does not have the resources to provide snow removal from private sidewalks, handicap access ramps, or driveway aprons. If you need assistance with snow removal, we suggest contacting a relative, friend, neighbor or hiring a contractor to remove the snow for you.
- Crews will, when feasible, apply the following standard when plowing snow in cul-de-sacs: one full pass will be made around the perimeter, pushing the snow to the middle of the cul-de-sac. Then as time allows, the snow will be hauled out of the center.
- Please **keep the catch basin adjacent to your property free from ice and snow** to help prevent flooding.
- Consider adopting one of the City's 3,300 fire hydrants this winter by keeping it clear of snow. This will help our Fire Department find a water source in an emergency.

Please visit us at www.appleton.org/government/public-works/winter-page for more information.

For questions about snow and ice operations, please call the Public Works Operations Division at (920) 832-5580.

For questions about unshoveled sidewalks, please call Public Works Engineering Division at (920) 832-6474.

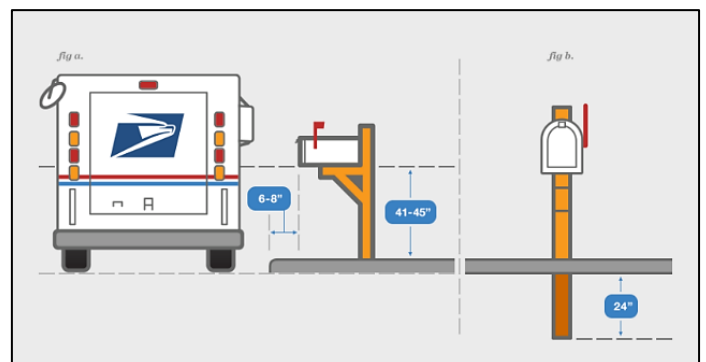
OVERNIGHT PARKING

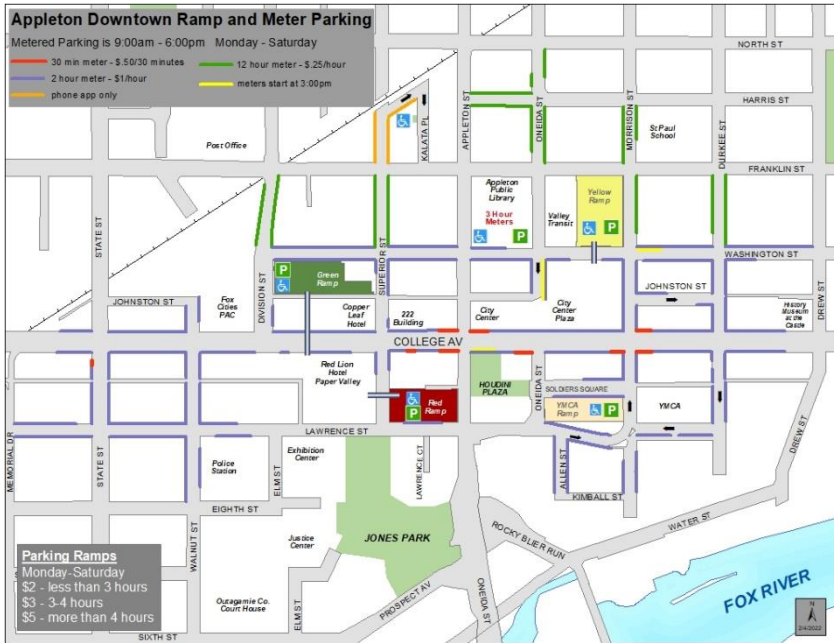
Parking is not allowed on any City street, 365 days per year, from 2 a.m. to 5 a.m. Why does the City of Appleton not allow overnight parking on city streets? The reasons range from operational benefits for the Department of Public Works, police operations, to aesthetic reasons. The City performs various operations that occur at night (i.e. garbage/recycling pick up, street sweeping, leaf pick up and snow plowing), all of which are accomplished more efficiently without vehicles parked on the street. This restriction also keeps neighborhoods looking cleaner overall. Applying for an Overnight Parking Permit can be completed online via our website under the "Online Services" tab, then click "Overnight Parking".

NO
OVERNIGHT
PARKING

MAILBOX PLACEMENT

Proper mailbox placement is important for City crews as well as Post Office mail carriers. The City of Appleton will not be responsible for any mailbox damage during city operations that does not meet Post Office guidelines. Visit www.usps.com/manage/mailboxes.htm for additional information.





The City of Appleton’s Parking Utility is responsible for maintenance & enforcement of the City owned parking ramps, off street parking, and meters.

This includes:

- Maintaining 3,230 parking stalls in the parking structures
- Maintaining 665 parking meters
- Enforcing all City ordinances & State Statutes
- Issuing citations

Please report any meters not operating correctly to
 (920) 832-6474

For more information give us a call at (920) 832-6474 or online at <https://www.appleton.org/visitors/parking>

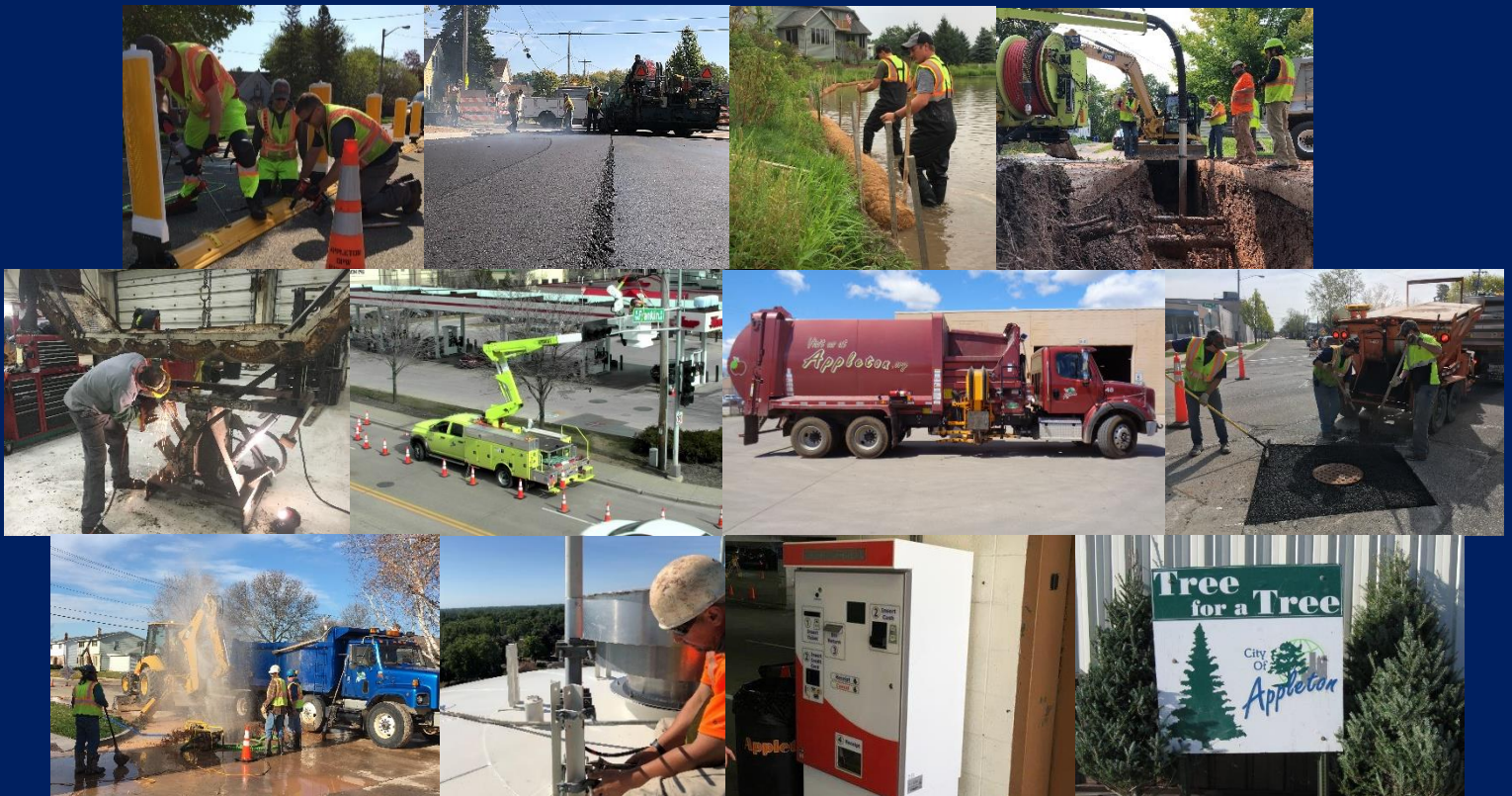
PARKING APP

The City has a mobile parking application called PassportParking. Users can purchase parking using a debit or credit card, monitor and receive notifications when sessions run low, extend time remotely, and add funds to pay for parking through the in-app wallet feature.

The PassportParking App can be downloaded through the App Store or Google Play for free. Users can also manage their parking at www.ppprk.com

COME JOIN OUR TEAM!

If you are interested in working for the City of Appleton, all open job positions can be found on our website. Go to Appleton.org and find the “Employment” button towards the bottom of the screen.





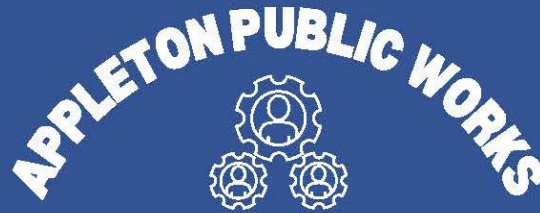
Public Works
2625 E. Glendale Ave.
Appleton, WI 54911

*****ECRWSEDDM*****

POSTAL CUSTOMER

PRESRT STD
U.S POSTAGE
PAID
APPLETON, WI
PERMIT #11

CARRIER ROUTE ECRWSS

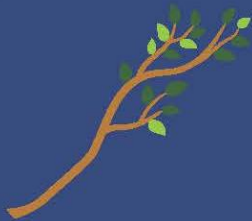


HELPING YOU AND THE ENVIRONMENT

Did you know that phosphorous causes excessive algae growth which can destroy other life forms found in our waterways? The good news is that Appleton Public Works has a plan! By switching to vacuum leaf collection over the next 5 years, leaves will move out of our streets and phosphorous out of our waterways.

WHERE IT BEGINS

It begins with YOU! As we implement the plan, you get to rake your leaves a shorter distance onto the terrace instead of into the street. This will result in cleaner and safer streets and preserve the pavement because no scraping is involved with vacuums!



BRUSH COLLECTION

Because vacuums can't suck up sticks and other yard waste, Appleton Public Works will collect yard waste by hand during normal collection schedules in the spring and fall. Please begin to bundle and/or bag yard waste in the fall similar to what you already do in the spring.

SNOW REMOVAL

Our sidewalk clearing was outsourced to a third party. By maximizing staff and modifying our large item collection, we can do more snow removal in-house. This means cost savings and reliability for you!



LARGE ITEM COLLECTION

Everyone benefits from timely and reliable snow removal, which is why we're focusing our crew on this effort during winter months and updating our large/ bulky item collection policy. Large item collection will be every other week April through September, limit two (2) approved items per collection. The best option is to find other ways to reuse your items to prevent them from going to the landfill.