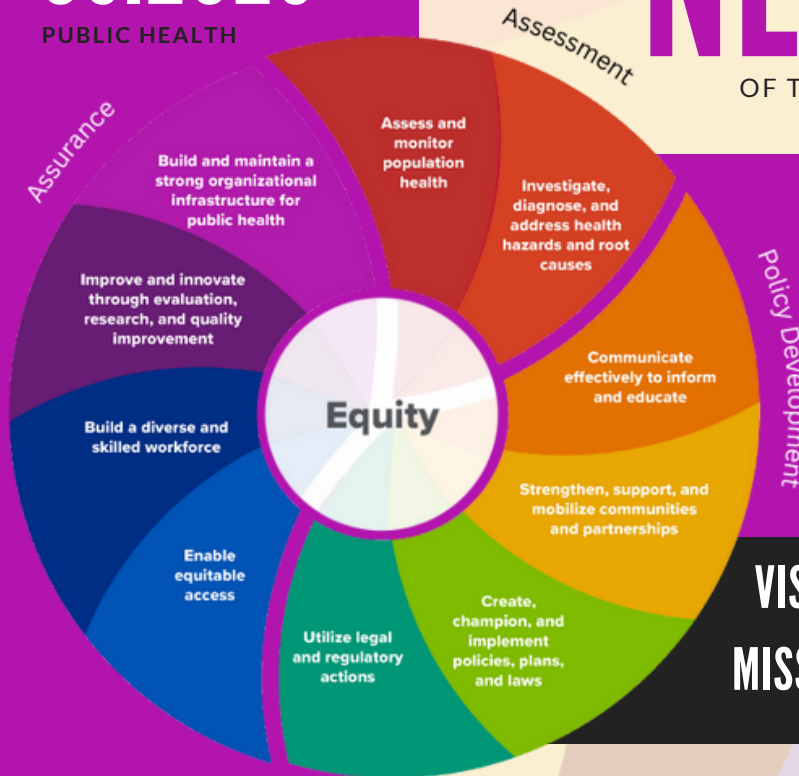


03.2023

PUBLIC HEALTH

NEWSLETTER

OF THE APPLETON PUBLIC HEALTH DEPARTMENT



IN THIS ISSUE:

Build and maintain a strong organizational infrastructure for public health

Community Partner:
East Central Weights and Measures Consortium

Meet Eric

VISION: Health for all, together.

MISSION: Facilitate equitable community wellbeing through education, health promotion, and response to public health needs.

10 ESSENTIAL PUBLIC HEALTH SERVICES

The 10 Essential Public Health Services provide a framework for public health to protect and promote the health of all people in all communities. To achieve equity, the Essential Public Health Services actively promote policies, systems, and overall community conditions that enable optimal health for all and seek to remove systemic and structural barriers that have resulted in health inequities. Such barriers include poverty, racism, gender discrimination, ableism, and other forms of oppression. Everyone should have a fair and just opportunity to achieve optimal health and well-being.

Each month, the Appleton Health Department Newsletter will feature stories about how we are achieving each of the 10 Essential Public Health Services. This month, we will focus on Essential Public Health Service #10: Build and maintain a strong organizational infrastructure for public health. Public Health organizational infrastructure includes managing financial and human resources effectively, and employing communications and strategic planning capacities and skills.

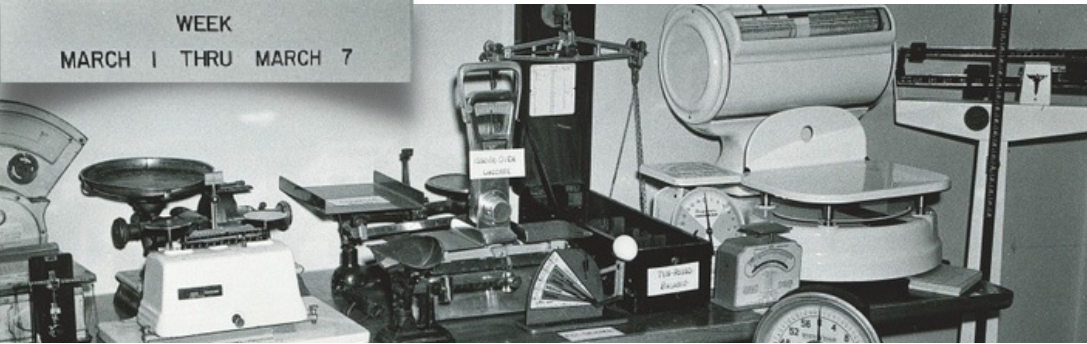
WHAT WE ARE DOING

To improve efficiency within the Department, the Appleton Health Department conducted a detailed time study within the Division of Environmental Health. This review revealed that while the number of routine inspections were down, the number of pre-licensing inspections—those inspections required for new restaurants or when there is a change of owner in an existing restaurant—have increased dramatically (121 in 2022 vs 57 in 2021). Other inspections, such as Tourist Rooming Houses (e.g., AirBnB, Vrbo), have also been on the rise. Ultimately, this analysis revealed that an additional Environmentalist was needed to ensure completion of routine inspections.

In November 2022, the Appleton Common Council approved the addition of the needed Environmentalist position. In December 2022, the Council approved a new license fee schedule. This new license fee schedule did two things: 1) fully fund the new Environmental Health position using sustainable revenue, and 2) reduce the overall burden to taxpayers by fully funding the Division's billable activities with license fees. By adding this additional staff member and increasing fees to cover incurred expenses, the net financial impact to the City was a savings of about \$54,000. Ensuring that we have enough staff and that those staff can be sustained, is how the Appleton Health Department is advancing efforts around building and maintaining a strong organizational infrastructure for public health.

COMMUNITY PARTNERS

NATIONAL WEIGHTS & MEASURES
WEEK
MARCH 1 THRU MARCH 7



CONSORTIUM EXPANDS CONSUMER PROTECTION

Weights and Measures Week is celebrated each year to commemorate President John Adams signing the first U.S. weights and measures legislation into law on March 2, 1799. As John Quincy Adams so aptly put, "Weights and Measures may be ranked among the necessities of life to every individual of human society." The East Central Weights and Measures Consortium was formed in 2003 in response to the consumer protection needs of surrounding communities.

The Consortium, now ten communities strong, launched with seven municipalities; Ashwaubenon, Kaukauna, Kimberly, Little Chute, New London, Ripon, and Waupaca; and later added Berlin (2008), Fox Crossing (2017), and Neenah (2021), for a total of 200 contracted days of service. Weights and Measures staff annually inspects and tests all commercially used weighing and measuring devices for both accuracy and proper operation, ensuring customers get what they pay for.

Some examples of inspected and tested commercial devices include:

- Computing, and pre-pack scales at supermarkets, bakeries, delis, and butcher shops
- Length measuring - Rope, chain, and wire
- Fuel oil, gas, and diesel delivery vehicle tank meters
- Vehicle scales at sand / gravel yards, recycling centers, and salvage yards
- Petroleum pumps at gas stations
- Platform / hopper scales
- Scales used for buying precious metals
- Timing devices - Car washes / vacuums, clothes dryers, and tire pumps
- Price verification



Above: Weights and Measures Specialist, Bill Neubert, inspecting the scales of a local retailer. Banner: City of Appleton Archival Photo. Weights and Measures equipment on display during Weights and Measures Week.



MEET ERIC



Eric Maggio, Appleton's City Sealer, started his Weights and Measures career in the U.S. Navy when a broken femur landed him shoreside. No longer able to work at sea as an aviation electrician, Eric moved to the Calibration Lab. "Just teach me, I can figure it out. Luckily I did because that led me into my line of work."

Eric has served the City of Appleton for nearly 15 years as the City Sealer who administers the Weights and Measures program for Appleton and the East Central Weights and Measures Consortium. The Consortium has grown to include ten communities under Eric's leadership.

Basketball and soccer are a family affair for the Maggio's but when Eric isn't spending time with his four children and wife, he is earning his Master's degree. "I like to learn. If I can keep my brain active and just continue to grow, I'll just be a better person. Learning from people in my classes- it's all growth."

BOARD OF HEALTH

CALENDAR

RESOURCES

[CDC-10 Essential Public Health Services -Full](#)

[Health Department Weights and Measures FAQ](#)

