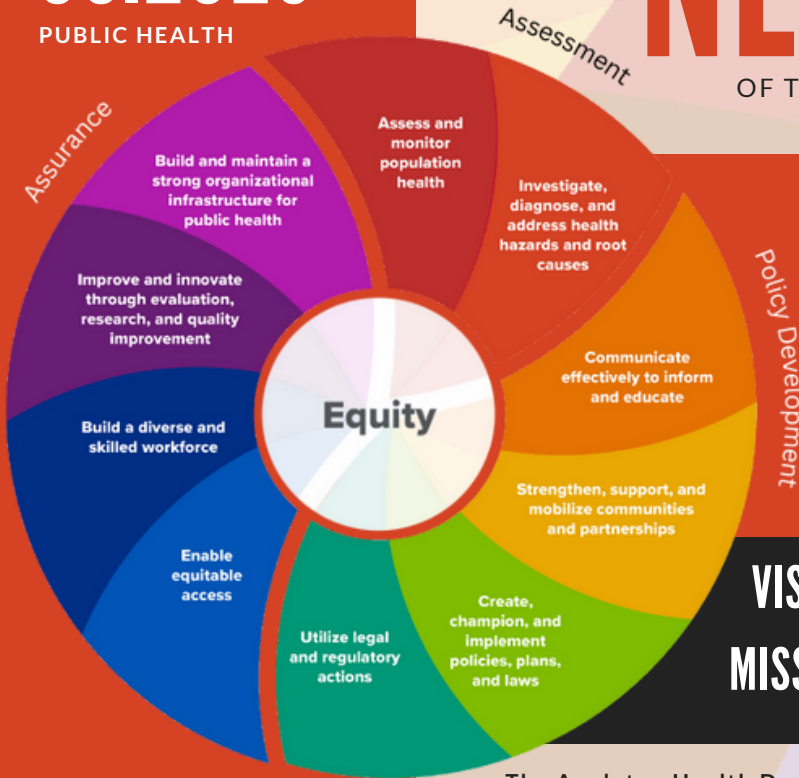


# 05.2023

PUBLIC HEALTH

# NEWSLETTER

OF THE APPLETON PUBLIC HEALTH DEPARTMENT



Investigate, diagnose, and address health hazards and root causes

Community Partner:  
Mosaic Family Health

Meet Val

**VISION:** Health for all, together.

**MISSION:** Facilitate equitable community wellbeing through education, health promotion, and response to public health needs.

## 10 ESSENTIAL PUBLIC HEALTH SERVICES

The 10 Essential Public Health Services provide a framework for public health to protect and promote the health of all people in all communities. To achieve equity, the Essential Public Health Services actively promote policies, systems, and overall community conditions that enable optimal health for all and seek to remove systemic and structural barriers that have resulted in health inequities. Such barriers include poverty, racism, gender discrimination, ableism, and other forms of oppression. Everyone should have a fair and just opportunity to achieve optimal health and well-being.

The Appleton Health Department Newsletter shares updates on how we are making progress towards achieving the 10 Essential Public Health Services. In this edition, our emphasis is on Essential Public Health Service #2 - Investigate, diagnose, and address health problems and hazards affecting the population.

## WHAT WE ARE DOING

The Appleton Health Department plays a vital role in investigating, diagnosing, and addressing health problems and hazards that can affect the entire community. Our Public Health Inspectors (Environmentalists) and Public Health Nurses work together with investigations when environmental factors and symptomology come together. Health department staff work to protect and promote the health of the Appleton residents by preventing the spread of communicable diseases, identifying and addressing health threats, and promoting healthy behaviors.

Gastroenteric investigations help identify outbreaks of foodborne illnesses, such as E.coli or Salmonella, and determine the source of the contamination. Our team conducts interviews, may collect laboratory samples, and provides education and counseling to affected individuals. These efforts can prevent the spread of infectious diseases and improve public health outcomes.

Several of our staff are Certified Lead Hazard Investigators and Certified Lead Risk Assessors. Certification prepares them to conduct thorough and safe lead hazard investigations to prevent and mitigate lead exposure in children. They collect paint, dust, and soil samples from homes of children with elevated blood levels to determine the source of lead exposure, and work with families to reduce exposure to lead. Identifying and mitigating lead hazards in homes can help prevent long-term health problems for Appleton children, such as developmental delays and cognitive impairments.

Through our investigations, diagnoses, and interventions, the Appleton Health Department plays a critical role in protecting public health and preventing the spread of diseases and health hazards in our community.

# COMMUNITY PARTNERS



## MOSAIC FAMILY HEALTH: TRAINING FUTURE LEADERS OF HEALTHCARE

Mosaic Family Health is a primary care medical practice and family medicine residency program located in Appleton, Wisconsin. In service to the community for over 40 years, Mosaic Family Health is the home of the Fox Valley Family Residency Program, a community-based affiliate of the Medical College of Wisconsin.

Mosaic Family Health's faculty is comprised of several experienced family medicine physicians, including Dr. Lee Vogel, who serves as the program's director, the Medical Advisor for the City of Appleton's Health Department, and the vice chair of the Board of Health. Mosaic is committed to providing high-quality, patient-centered care to the community, and are dedicated to training new physicians in the field of family medicine, as well as providing a well-rounded training experience, including public and community health.

Mosaic Family Health's partnership with the Medical College of Wisconsin provides residents with access to the latest research and medical technologies and allows the practice to offer advanced training opportunities to its healthcare providers. This collaboration also helps to ensure that patients receive the highest quality of care possible, with healthcare providers who are up to date on the latest medical advancements and best practices.

The Appleton Health Department and Mosaic Family Health partner across a range of projects and initiatives. These include collaboration in offering specialty vaccine clinics to medically underserved populations and training medical residents about health promotion topics and the governmental public health infrastructure.



## RESOURCES

[CDC-10 Essential Public Health Services -Full](#)

[Mosaic Family Health](#)

## MEET VAL



Val Davis, BSN, PHN (pictured left)

Val has been a nurse for 20 years, with the last four years of her career spent serving as a Public Health Nurse (PHN) with the Appleton Health Department. Her work involves a diverse set of responsibilities, including working with clients who have newly diagnosed HIV, elevated blood lead levels, and communicable diseases, as well as providing education and support to help manage their conditions.

Val has a particular interest in working with clients with suspected, latent, and active tuberculosis, as it provides an opportunity to make a significant impact by identifying and preventing the spread of infectious disease. As a PHN, she values the ability to visit clients in their homes, providing a more complete understanding of their personal circumstances.

In her free time, Val enjoys going to yoga, hiking, paddle boarding, and taking pictures of nature. She is married to her husband of 23 years and has two children, three cats, and a dog. Val finds her work as a PHN rewarding because it allows her to work closely with the community and focus on preventive measures.

## BOARD OF HEALTH

## CALENDAR