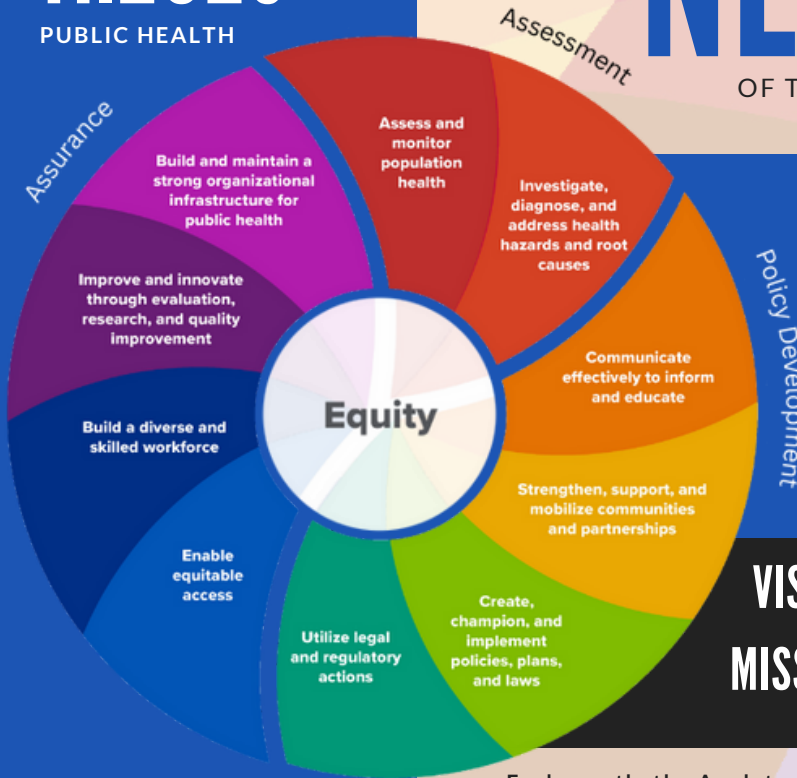


11.2023

PUBLIC HEALTH

NEWSLETTER

OF THE APPLETON PUBLIC HEALTH DEPARTMENT



IN THIS ISSUE:

Enable equitable access

Community Partner:
Vivent Health

Meet Jena

VISION: Health for all, together.

MISSION: Facilitate equitable community wellbeing through education, health promotion, and response to public health needs.

10 ESSENTIAL PUBLIC HEALTH SERVICES

The 10 Essential Public Health Services provide a framework for public health to protect and promote the health of all people in all communities. To achieve equity, the Essential Public Health Services actively promote policies, systems, and overall community conditions that enable optimal health for all and seek to remove systemic and structural barriers that have resulted in health inequities. Such barriers include poverty, racism, gender discrimination, ableism, and other forms of oppression. Everyone should have a fair and just opportunity to achieve optimal health and well-being.

Each month, the Appleton Health Department Newsletter will feature stories about how we are achieving each of the 10 Essential Public Health Services. This month, we will focus on Essential Public Health Service #7: Assure an effective system that enables equitable access to the individual services and care needed to be healthy.

WHAT WE ARE DOING

Appleton Public Health Nurses offer a compassionate approach to identify, notify, and provide support to individuals who have been diagnosed with HIV and the sexual and needle-sharing partners of those diagnosed with HIV. The Partner Services Program is the method used for HIV prevention and care efforts and the program's primary goals are:

Identification of Partners: Appleton Public Health Nurses work together with individuals newly diagnosed with HIV to identify sexual or needle-sharing partners. This is done discreetly and confidentially, and clients remain anonymous to partners.

Notification and Testing: Once partners are identified, Appleton Public Health Nurses inform them about potential exposure to HIV and the importance of getting free, confidential HIV testing and testing for other sexually transmitted infections (STIs).

Counseling and Support and Prevention Services: Partners who test positive for HIV receive immediate linkage to care and treatment services. Those who test negative are provided with prevention information and resources, including education on safer sex practices, needle exchange programs, and access to pre-exposure prophylaxis (PrEP), an effective preventive treatment for those at higher risk.

Contact Tracing: Contact tracing helps break the chain of HIV transmission. It allows for early diagnosis and timely treatment of newly infected individuals.

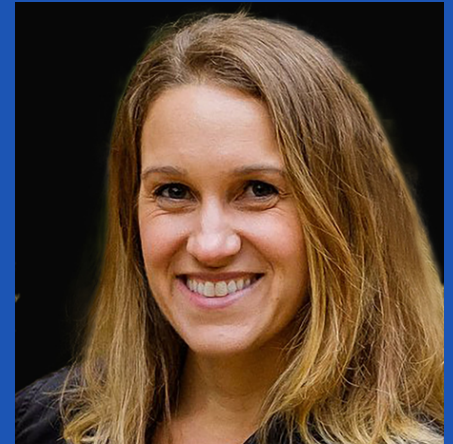
Data Collection and Monitoring: Programs collect data on partner notifications and outcomes to assess the effectiveness of the Partner Services Program and improve equitable access to care.

The Appleton Health Department's participation in the Partner Services Program plays a crucial role in connecting Appleton residents to care when it is needed most and provides a pathway to access resources to protect themselves and their partners.

COMMUNITY PARTNERS



MEET JENA



Jena McNeil (she/her) serves the City of Appleton as a Public Health Nurse. Jena first earned her Masters of Public Health Degree in Epidemiology and she brings a wealth of experience working with food and waterborne infections, outbreak investigations, and statistics. After relocating to Appleton, Jena pursued her nursing degree to continue her career in Public Health.

As an Appleton resident, Jena loves that she has a vested interest in the services she provides. "I love being able to take something that is a more complex, science idea and break it down to a level where people can understand it. Maybe they either didn't [understand], they couldn't understand before, or no one had given them the time to really answer their questions and give them information in a way that was useful for them."

Jena enjoys being outdoors and spending time with her family, but the perfect day starts with a run and a cup of coffee with a few friends.

VIVENT HEALTH

Appleton Public Health Nurses bridge the gap between diagnosis and treatment for Appleton residents newly diagnosed with HIV. Our nurses make referrals, provide counsel, education, and resources, and even make initial appointments for clients entering care. Vivent Health is specialized healthcare for people living with HIV and provides an "HIV medical home" for many clients.

Vivent Health's welcoming, safe, and judgment-free zone makes accessing a continuum of care easier for every patient. This includes regular medical check-ups, personalized treatment plans, and adherence support for antiretroviral therapy (ART). ART works by reducing the amount of the HIV virus in the blood to *undetectable* levels so low that the HIV virus cannot be passed on through sexual activity or breast/chest feeding. Having an undetectable viral load likely reduces the risk of HIV transmission through sharing needles, syringes, or other drug injection equipment (for example, cookers), but we don't know by how much.

In addition to providing medical care Vivent Health provides or connects clients with services including mental health and counseling, pharmacy services, case management, prevention and education, support groups, housing assistance, legal services, dental care, nutritional support, transportation assistance, and research and clinical trials. Vivent Health's comprehensive approach fosters hope, resilience, and a path to a healthier future and stronger communities.

Vivent Health has locations in Appleton, Beloit, Eau Claire, Green Bay, Kenosha, La Crosse, Madison, Milwaukee, Superior, and Wausau.

DID YOU KNOW?

HIV IS PASSED ON THROUGH BODILY FLUIDS IF THE PERSON WITH HIV HAS A *DETECTABLE* VIRAL LOAD. IT'S *NOT* PASSED ON BY SHARING FOOD/DRINKS, SPITTING, KISSING, SNEEZING, OR COUGHING.

RESOURCES

[CDC-10 Essential Public Health Services -Full](#)
[Vivent Health Services](#)



BOARD OF HEALTH

CALENDAR