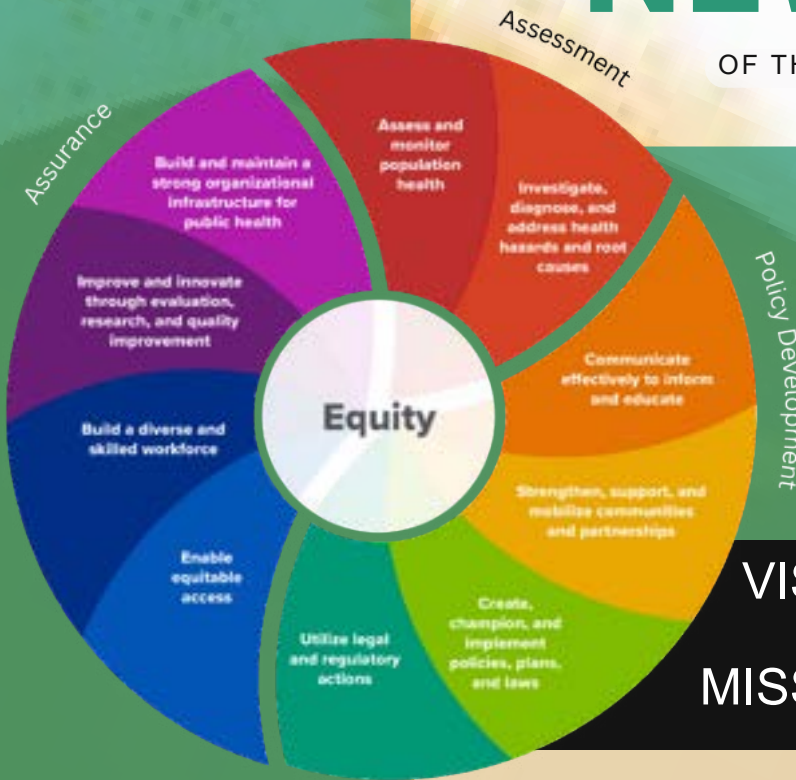


03.2024

PUBLIC HEALTH

# NEWSLETTER

OF THE APPLETON PUBLIC HEALTH DEPARTMENT



## IN THIS ISSUE:

Weights and Measures: Municipal Programs

Community Partner: Wisconsin Weights and Measures Association

Meet Todd

**VISION:** Health for all, together.

Facilitate equitable community wellbeing

**MISSION:** through education, health promotion, and response to public health needs.

## 10 ESSENTIAL PUBLIC HEALTH SERVICES

Each month, the Appleton Health Department Newsletter features stories about how we are achieving each of the 10 Essential Public Health Services. This month, we focus on:

Essential Public Health Service #6: Utilize legal and regulatory actions designed to improve and protect the public's health.

## WEIGHTS AND MEASURES: MUNICIPAL PROGRAMS

The structure of the Appleton Weights and Measures program is unique within the state whereas we operate as a consortium of communities – currently a dozen cities, towns, and villages – all within the Appleton Health Department. Weights and Measures programs play a crucial role in benefiting the local communities and municipalities in several ways, but what does it have to do with Public Health?

Legal and regulatory actions provide the foundation for implementing measures aimed at safeguarding consumer health and well-being. These policies encompass various aspects such as food safety, product quality, and accurate labeling, or pricing. Simplest of all, Weights and Measures aims to ensure fair trade and to extend the buying power of your dollar, which helps everyone in the community.

People are empowered through the Weights and Measures program to make informed choices on the products and services they buy, to build trust in local businesses, and to be assured they are getting what they are paying for. By enforcing regulations and collaborating with stakeholders, consumer protection policies create a healthier and more equitable marketplace, serving as a critical component of public health infrastructure, ensuring protection from potential health hazards and injustices in our daily interactions as consumers.

# COMMUNITY PARTNERS

## WISCONSIN WEIGHTS AND MEASURES ASSOCIATION



Did you know that Appleton hosted the Fall Conference and annual business meeting for the Wisconsin Weights and Measures Association (WWMA) the past two years? Not only has the City of Appleton been an integral contributor to the WWMA for its 59-year history, but it was also a founding member. The WWMA is a forum for state officials and inspectors to discuss items like, “How do we test the accuracy of electric vehicle charging stations?” or “Do we have weights and measures policies in place for the sale of marijuana if it became legal in Wisconsin?”

Formed through collaboration with other local and tribal communities, the WWMA assists in enforcing standards that guarantee businesses accurately measure and label their products, preventing consumers from being misled or cheated. Additionally, the WWMA offers guidance and support to Appleton and other municipalities in implementing and enforcing Weights and Measures (W&M) regulations, aiding in compliance with evolving state and federal standards. The association also provides training programs to city and state officials involved in W&M enforcement, ensuring effective regulation of Wisconsin businesses. The WWMA advocates at the National Conference on Weights & Measures for policies that benefit the local community, fostering a transparent and equitable marketplace.

Eric Maggio, Appleton City Sealer and East Central Weights and Measures Consortium Administrator, is the current WWMA Vice President and has served as WWMA President. Todd Schmidt, Appleton Weights and Measures Specialist, has also served as president of the Wisconsin Weights and Measures Association.

## RESOURCES

[CDC-10 Essential Public Health Services -Full](#)

[Wisconsin Weights and Measures Association](#)



**Public Health**  
Prevent. Promote. Protect.



## MEET TODD



Todd Schmidt has served Appleton and the East Central Weights and Measures Consortium municipalities for the last five years as a Weights and Measures Specialist. The scope of consumer protection program ranges from inspecting gas pumps, grocery scales, and price scanners to more unexpected items such as high school wrestling scales, linoleum length, and firewood. With such a variety of tasks Todd’s curiosity keeps him engaged in the work and looking for answers. “Wisconsin is known as a consumer protection state. Chances are there is something in state statute about almost any [weights and measures] question that comes up.”

When Todd isn’t playing board games and video games with his three kids he also enjoys collecting vinyl records, backpacking, and he is planning his first bike-packing trip for this summer.

[BOARD OF HEALTH CALENDAR](#)