

Public Involvement Meeting
N. Lawe Street
College Ave to Wisconsin Ave
City of Appleton

March 18, 2024



Ingenuity, Integrity,
 and Intelligence.

www.AyresAssociates.com

1

Welcome

- Thank you for attending!
- Introductions
 - City of Appleton
 - Ayres Associates
 - Wisconsin DOT

State of Wisconsin
Department of Transportation



Ingenuity, Integrity, and Intelligence. www.AyresAssociates.com

2

Meeting Format

- Formal Presentation
- General Project Questions
- Meet One on One
- Do not forget to:
 - Sign in
 - Take Handout with comment sheet

N. Lawe Street
College Avenue to Wisconsin Avenue
Outagamie County
WisDOT Project ID 4984-24-74/5

Comments From:
Name: _____
Address: _____
Telephone: _____
Date: _____

Please Print:



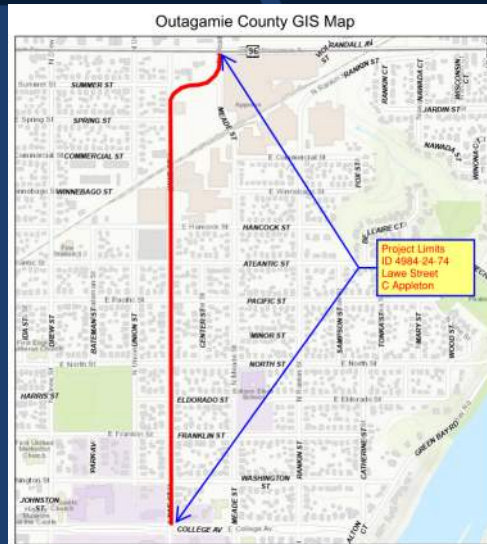
Ingenuity, Integrity, and Intelligence.

www.AyresAssociates.com

3

Purpose of Meeting

- Present the purpose and need of the proposed project
- Discuss proposed improvements
- Provide opportunity to voice your questions and comments



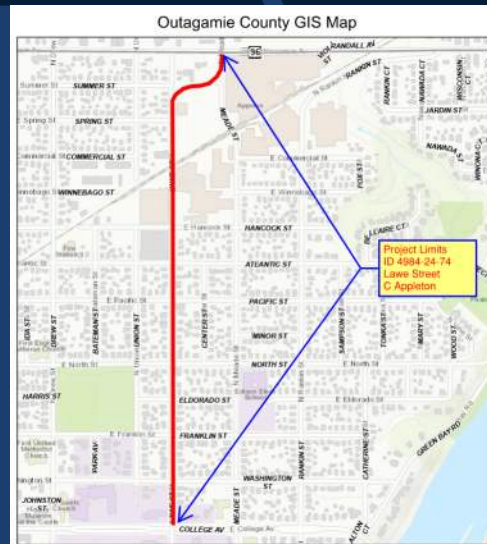
Ingenuity, Integrity, and Intelligence.

www.AyresAssociates.com

4

Lawe Street – Project Basics

- Functionally classified as a Minor Arterial roadway
 - A vital north/south route through the City
- Mix of residential, business and industrial uses
- 7,600 vehicles per day
- Last reconstructed in 1973
 - Pavement is at the end of its useful life



Ingenuity, Integrity, and Intelligence.

www.AyresAssociates.com

5

Project Purpose and Need

- Replace deteriorating concrete pavement
- Replace curb & gutter
- Replace sidewalk
- Reconstruct pedestrian crossings
- Replace storm sewer
- Propose traffic calming and traffic safety features



Ingenuity, Integrity, and Intelligence.

www.AyresAssociates.com

6

Proposed Improvements

- Reconstruct the existing concrete roadway, curb & gutter, and sidewalks:
 - 10-foot-wide travel lanes
 - 6-foot-wide shoulder / bicycle accommodations
 - Sidewalks replaced on both sides of the roadway
 - Pedestrian crossings reconstructed at all intersections

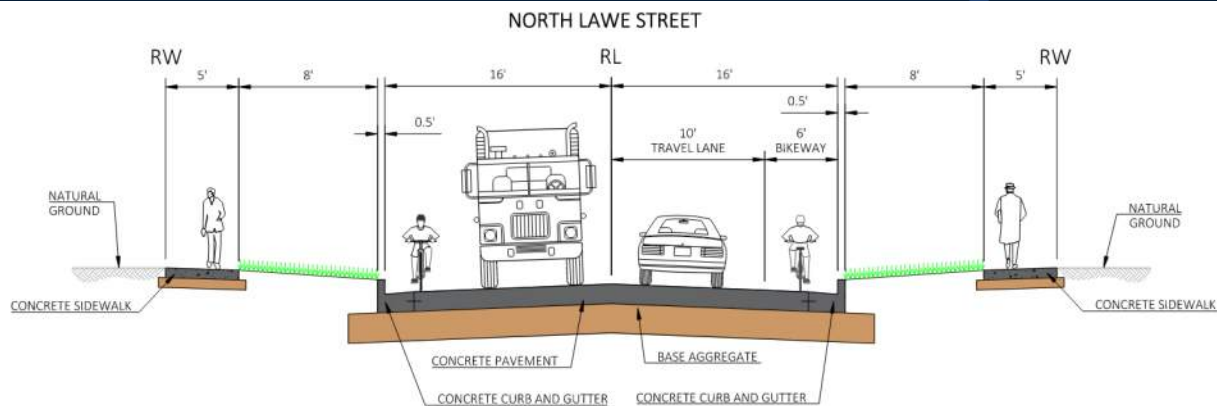


Ingenuity, Integrity, and Intelligence.

www.AyresAssociates.com

7

Typical Section



FINISHED TYPICAL SECTION FOR NORTH LAWE STREET
COLLEGE AVENUE TO EAST SPRING STREET



Ingenuity, Integrity, and Intelligence.

www.AyresAssociates.com

8

Proposed Improvements

- At North Street and at Pacific Street:
 - 6-ft wide pedestrian refuge medians
 - Proposed traffic calming feature
 - Provide safer pedestrian crossings of Lawe Street

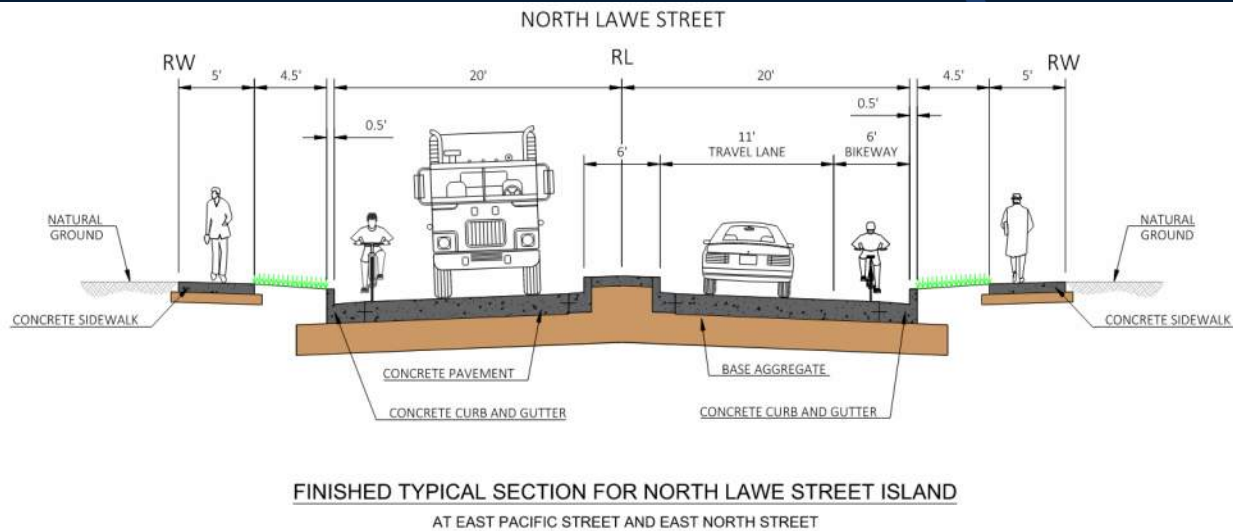


Ingenuity, Integrity, and Intelligence.

www.AyresAssociates.com

9

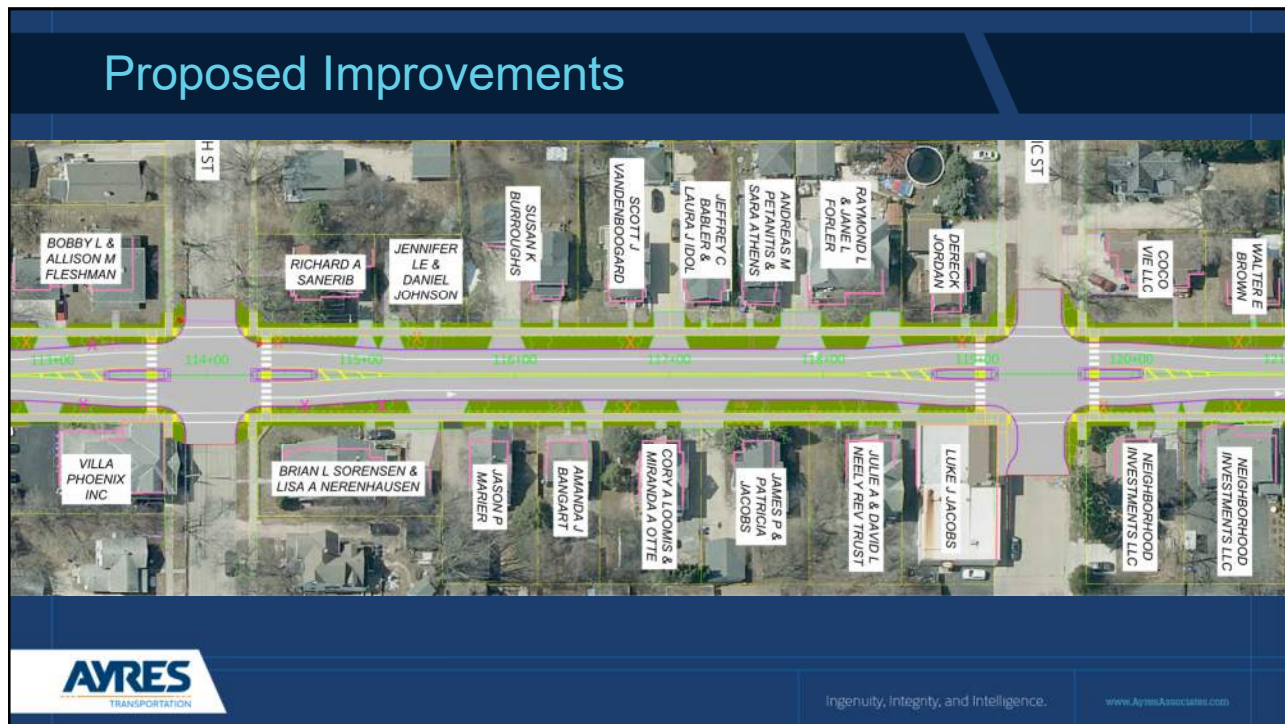
Typical Section – Pedestrian Refuge



Ingenuity, Integrity, and Intelligence.

www.AyresAssociates.com

10



11

Proposed Improvements

- Spring Street to Wisconsin Avenue:
 - Revise pavement marking lines and arrows
 - Provide continuous bicycle accommodations from College Avenue to Wisconsin Avenue
- Railroad crossing:
 - Improve sidewalk crossing at tracks

AVRES
TRANSPORTATION

Ingenuity, Integrity, and Intelligence. www.AyresAssociates.com

12

Right-of-Way

- Temporary Limited Easements (TLE) are expected along the entire project to:
 - Match grades in yards
 - Construct driveways, sidewalks, and curb ramps at intersections
- The extent of grading shown on displays is approximate
- Additional right-of-way may be required at a few locations
 - The exact needs are still being evaluated



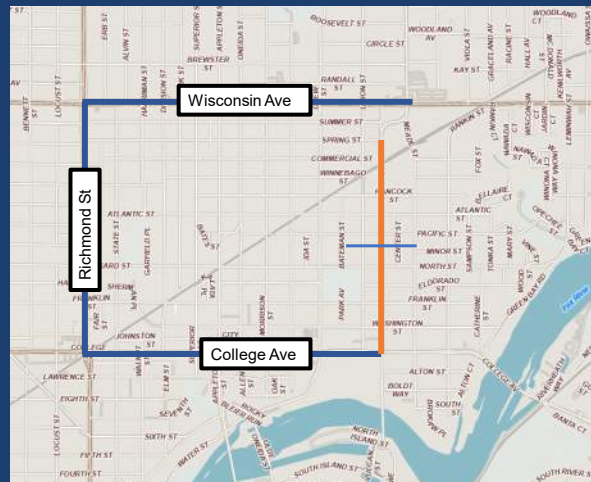
Ingenuity, Integrity, and Intelligence.

www.AyresAssociates.com

13

Traffic Control – Construction Staging

- Roadway will be closed to through traffic
- Local access to be maintained to the extent possible
- Signed detour:
 - College Ave – Richmond St – Wisconsin Ave
- Construction staging options being considered



Ingenuity, Integrity, and Intelligence.

www.AyresAssociates.com

14

Project Schedule

- Right-of-way / TLE Acquisition: Begin Fall 2024
- Final Roadway Plans: August 2025
- Utility relocations: Fall 2025
- Construction: Spring-Summer 2026



Ingenuity, Integrity, and Intelligence.

www.AyresAssociates.com

15

Questions?

Thank you!!



Ingenuity, Integrity, and Intelligence.

www.AyresAssociates.com

16

Ayres – At Our Core

WE PROVIDE
**Smart,
Creative
Solutions**
AYRES
Est. 1959

WE CONDUCT
**Business
WITH
Integrity**
AYRES
Est. 1959

WE
**Challenge,
Support,
AND
Recognize**
OUR EMPLOYEE OWNERS
AYRES
Est. 1959

WE WORK WITH
**Clients As
Partners**
AYRES
Est. 1959

WE HAVE
**Commitment
TO
Community**
AYRES
Est. 1959

AYRES
TRANSPORTATION

Ingenuity, Integrity, and Intelligence.

www.AyresAssociates.com